

Silvasti Holding A/S

Fabriksvej 8
DK-9690 Fjerritslev

CVR no. 31 08 53 65

Annual report 2020

The annual report was presented and approved at the
Company's annual general meeting

on _____ 20 ____

chairman of the annual general meeting

Contents

Statement by the Board of Directors and the Executive Board	2
Independent auditor's report	3
Management's review	6
Company details	6
Group chart	7
Financial highlights for the Group	8
Operating review	9
Consolidated financial statements and parent company financial statements 1 January – 31 December	10
Income statement	10
Balance sheet	11
Statement of changes in equity	13
Cash flow statement	14
Notes	15

Statement by the Board of Directors and the Executive Board

The Board of Directors and the Executive Board have today discussed and approved the annual report of Silvasti Holding A/S for the financial year 1 January – 31 December 2020.

The annual report has been prepared in accordance with the Danish Financial Statements Act.

In our opinion, the consolidated financial statements and the parent company financial statements give a true and fair view of the Group's and the Parent Company's assets, liabilities and financial position at 31 December 2020 and of the results of the Group's and the Parent Company's operations and consolidated cash flows for the financial year 1 January – 31 December 2020.

Further, in our opinion, the Management's review gives a fair review of the development in the Group's and the Parent Company's activities and financial matters, of the results for the year and of the Group's and the Parent Company's financial position.

We recommend that the annual report be approved at the annual general meeting.

Fjerritslev, 30 June 2021
Executive Board:

Mikael Alfred Schmidt

Board of Directors:

Ville Pentti Silvasti
Chairman

Panu Jukka Silvasti

Mikael Alfred Schmidt

Independent auditor's report

To the shareholders of Silvasti Holding A/S

Opinion

We have audited the consolidated financial statements and the parent company financial statements of Silvasti Holding A/S for the financial year 1 January – 31 December 2020 comprising income statement, balance sheet, statement of changes in equity and notes, including accounting policies, for the Group as well as for the Parent Company and a cash flow statement for the Group. The consolidated financial statements and parent company financial statements are prepared in accordance with the Danish Financial Statements Act.

In our opinion, the consolidated financial statements and the parent company financial statements give a true and fair view of the Group's and the Parent Company's assets, liabilities and financial position at 31 December 2020 and of the results of the Group's and the Parent Company's operations and consolidated cash flows for the financial year 1 January – 31 December 2020 in accordance with the Danish Financial Statements Act.

Basis for opinion

We conducted our audit in accordance with International Standards on Auditing (ISAs) and the additional requirements applicable in Denmark. Our responsibilities under those standards and requirements are further described in the "Auditor's responsibilities for the audit of the consolidated financial statements and the parent company financial statements" section of our report.

We are independent of the Group in accordance with the International Ethics Standards Board for Accountants' Code of Ethics for Professional Accountants (IESBA Code) and the additional requirements applicable in Denmark, and we have fulfilled our other ethical responsibilities in accordance with these rules and requirements.

We believe that the audit evidence we have obtained is sufficient and appropriate to provide a basis for our opinion.

Management's responsibility for the consolidated financial statements and the parent company financial statements

Management is responsible for the preparation of consolidated financial statements and parent company financial statements that give a true and fair view in accordance with the Danish Financial Statements Act and for such internal control that Management determines is necessary to enable the preparation of consolidated financial statements and parent company financial statements that are free from material misstatement, whether due to fraud or error.

In preparing the consolidated financial statements and the parent company financial statements, Management is responsible for assessing the Group's and the Parent Company's ability to continue as a going concern, disclosing, as applicable, matters related to going concern and using the going concern basis of accounting in preparing the consolidated financial statements and the parent company financial statements unless Management either intends to liquidate the Group or the Company or to cease operations, or has no realistic alternative but to do so.

Independent auditor's report

Auditor's responsibilities for the audit of the consolidated financial statements and the parent company financial statements

Our objectives are to obtain reasonable assurance as to whether the consolidated financial statements and the parent company financial statements as a whole are free from material misstatement, whether due to fraud or error, and to issue an auditor's report that includes our opinion. Reasonable assurance is a high level of assurance but is not a guarantee that an audit conducted in accordance with ISAs and the additional requirements in Denmark will always detect a material misstatement when it exists. Misstatements may arise from fraud or error and are considered material if, individually or in the aggregate, they could reasonably be expected to influence the economic decisions of financial statement users made on the basis of these consolidated financial statements and parent company financial statements.

As part of an audit conducted in accordance with ISAs and the additional requirements applicable in Denmark, we exercise professional judgement and maintain professional scepticism throughout the audit. We also

- identify and assess the risks of material misstatement of the consolidated financial statements and the parent company financial statements, whether due to fraud or error, design and perform audit procedures responsive to those risks, and obtain audit evidence that is sufficient and appropriate to provide a basis for our opinion. The risk of not detecting a material misstatement resulting from fraud is higher than for one resulting from error as fraud may involve collusion, forgery, intentional omissions, misrepresentations or the override of internal control.
- obtain an understanding of internal control relevant to the audit in order to design audit procedures that are appropriate in the circumstances, but not for the purpose of expressing an opinion on the effectiveness of the Group's and the Parent Company's internal control.
- evaluate the appropriateness of accounting policies used and the reasonableness of accounting estimates and related disclosures made by Management.
- conclude on the appropriateness of Management's use of the going concern basis of accounting in preparing the consolidated financial statements and the parent company financial statements and, based on the audit evidence obtained, whether a material uncertainty exists related to events or conditions that may cast significant doubt on the Group's and the Parent Company's ability to continue as a going concern. If we conclude that a material uncertainty exists, we are required to draw attention in our auditor's report to the related disclosures in the consolidated financial statements and the parent company financial statements or, if such disclosures are inadequate, to modify our opinion. Our conclusions are based on the audit evidence obtained up to the date of our auditor's report. However, future events or conditions may cause the Group and the Company to cease to continue as a going concern.
- evaluate the overall presentation, structure and contents of the consolidated financial statements and the parent company financial statements, including the disclosures, and whether the consolidated financial statements and the parent company financial statements represent the underlying transactions and events in a manner that gives a true and fair view.
- obtain sufficient appropriate audit evidence regarding the financial information of the entities or business activities within the Group to express an opinion on the consolidated financial statements. We are responsible for the direction, supervision and performance of the group audit. We remain solely responsible for our audit opinion.

We communicate with those charged with governance regarding, among other matters, the planned scope and timing of the audit and significant audit findings, including any significant deficiencies in internal control that we identify during our audit.

Independent auditor's report

Statement on the Management's review

Management is responsible for the Management's review.

Our opinion on the consolidated financial statements and the parent company financial statements does not cover the Management's review, and we do not express any form of assurance conclusion thereon.

In connection with our audit of the consolidated financial statements and the parent company financial statements, our responsibility is to read the Management's review and, in doing so, consider whether the Management's review is materially inconsistent with the consolidated financial statements or the parent company financial statements or our knowledge obtained during the audit, or otherwise appears to be materially misstated.

Moreover, it is our responsibility to consider whether the Management's review provides the information required under the Danish Financial Statements Act.

Based on the work we have performed, we conclude that the Management's review is in accordance with the consolidated financial statements and the parent company financial statements and has been prepared in accordance with the requirements of the Danish Financial Statement Act. We did not identify any material misstatement of the Management's review.

Aalborg, 30 June 2021

KPMG

Statsautoriseret Revisionspartnerselskab

CVR no. 25 57 81 98

Steffen S. Hansen
State Authorised
Public Accountant
mne32737

Silvasti Holding A/S
Annual report 2020
CVR no. 31 08 53 65

Management's review

Company details

Silvasti Holding A/S
Fabriksvej 8
DK-9690 Fjerritslev

CVR no.	31 08 53 65
Established:	7 December 2007
Registered office:	Jammerbugt
Financial year:	1 January – 31 December

Board of Directors

Mikael Alfred Schmidt
Panu Jukka Silvasti
Ville Pentti Silvasti

Executive Board

Mikael Alfred Schmidt

Auditor

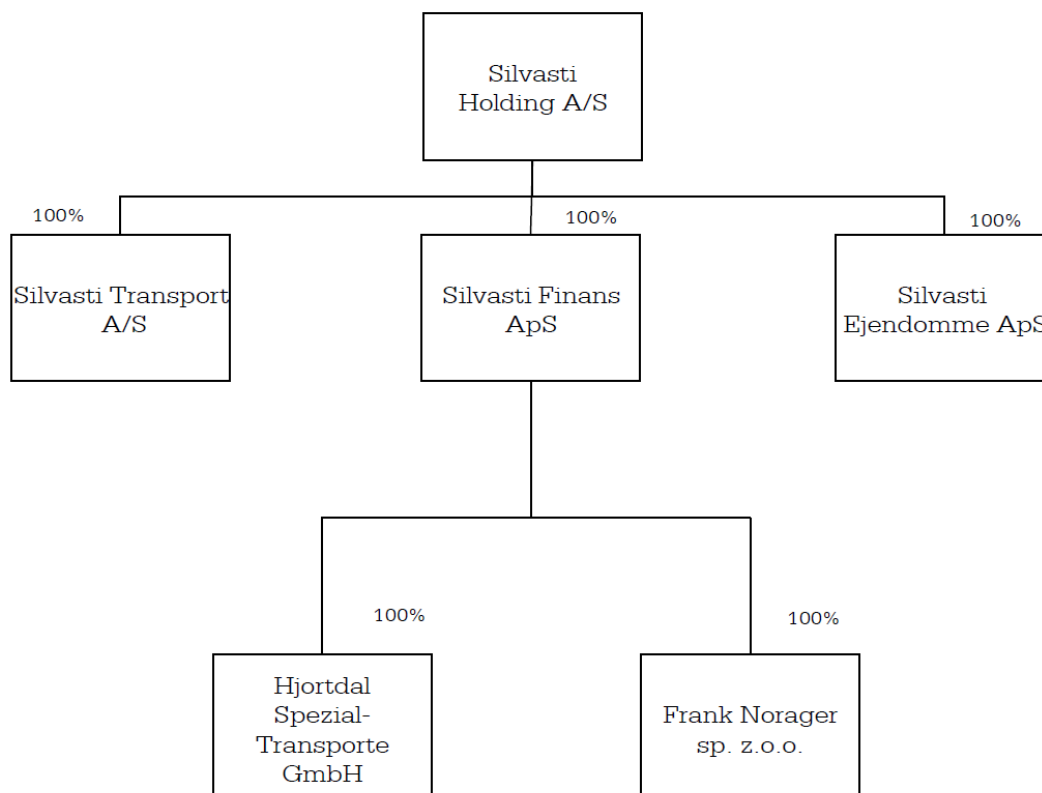
KPMG
Statsautoriseret Revisionspartnerselskab
Østre Havnegade 22D
9000 Aalborg
CVR no. 25 57 81 98

Annual general meeting

The annual general meeting will be held on 30 June 2021.

Management's review

Group chart



Management's review

Financial highlights for the Group

DKK'000	2020	2019	2018	2017	2016
Profit/loss before depreciation, amortisation, write-downs and impairment losses	27.892	27.323	33.362	12.805	-1.282
Operating profit/loss	9.667	9.359	12.263	-7.299	-23.275
Profit/loss from financial income and expenses	-1.818	-1.809	-5.068	-6.105	-4.773
Profit/loss for the year	5.791	5.134	5.262	-10.571	-22.630
Total assets	102.368	118.222	175.611	235.171	213.865
Investments in property, plant and equipment	7.944	2.283	2.036	15.327	25.628
Equity	36.699	31.071	25.907	20.736	36.706
Cash flows from operating activities	21.887	50.020	71.100	-29.079	38.817
Cash flows from investing activities	-2.254	4.082	7.042	3.959	-19.648
Cash flows from financing activities	-19.113	-20.654	-50.080	-8.986	7.546
Total cash flows	520	33.448	28.062	-34.106	26.715
Return on equity	17%	18%	23%	-37%	-47%
Solvency ratio	36%	26%	15%	9%	17%
Average number of full-time employees	73	70	67	97	127

The financial ratios have been calculated as follows:

Return on equity

$$\frac{\text{Profit from ordinary activities after tax} \times 100}{\text{Average equity}}$$

Solvency ratio

$$\frac{\text{Equity ex. non-controlling interests at year end} \times 100}{\text{Total equity and liabilities at year end}}$$

Management's review

Operating review

The Group's principal activities

The Parent Company owns the subsidiaries.

Silvasti Transport A/S is, together with Silvasti Finans ApS, among the largest and leading companies specialised in transport and shipping of special cargo.

The Group's versatile fleet of transport consists of vehicles for transportation of heavy, tall, long and wide cargo. The principal business activity of Silvasti Transport A/S is transport and shipping of special cargo domestically and abroad. Silvasti Finans ApS' principal activity is rental of transport equipment and ownership of subsidiaries.

Developments in activities and financial position

The Group's income statement for 2020 shows a profit of DKK 5,791 thousand as against DKK 5,134 thousand in 2019. The profit was in line with the expectations.

Equity in the Group's balance sheet at 31 December 2020 stood at DKK 36,699 thousand as against DKK 31,071 thousand at 31 December 2019.

The Group has access to cash resources through the Parent Company if needed.

During the financial year, the Group acquired a sistercompany, which was subsequently merged with Silvasti Transport A/S. The merger had no major impact on results or equity.

Outlook

The Group expects a profit before tax at the same level for the coming year. In the coming financial year, the Company will have a special focus on both external and internal costs and expects the increased attention to contribute to improved earnings and thereby also improved results.

Environmental matters

The Group strives to renew its equipment to meet the latest environmental standards and to provide its services as efficiently as possible while sustaining the environment. The Group has multi-year procurement agreements with trailer and truck suppliers.

Objectives and policies of financial risk management

The Group is not exposed to any significant financial risks.

Events after the balance sheet date

No important events have occurred after end of the financial year.

Consolidated financial statements and parent company financial statements 1 January – 31 December

Income statement

DKK'000	Note	Group		Parent Company	
		2020	2019	2020	2019
Gross profit/loss		72.924	64.271	-107	3
Staff costs	2	-45.032	-36.948	0	0
Profit before depreciation, amortisation, write-downs and impairment losses		27.892	27.323	-107	3
Depreciation and impairment losses of property, plant and equipment		-18.225	-17.964	0	0
Other operating costs		-676	-772	0	0
Profit/loss before financial income and expenses		8.991	8.587	-107	3
Income from equity investments in group entities		0	0	5.343	4.724
Other financial income	3	451	1.536	840	758
Other financial expenses	4	-2.269	-3.345	-296	-269
Profit before tax		7.173	6.778	5.780	5.216
Tax on profit for the year	5	-1.382	-1.644	11	-82
Profit for the year	6	<u>5.791</u>	<u>5.134</u>	<u>5.791</u>	<u>5.134</u>

Consolidated financial statements and parent company financial statements 1 January – 31 December

Balance sheet

DKK'000	Note	Group		Parent Company	
		2020	2019	2020	2019
ASSETS					
Fixed assets					
Property, plant and equipment					
	7				
Land and buildings		6.758	6.846	0	0
Plant and machinery		80.609	96.492	0	0
		<u>87.367</u>	<u>103.338</u>	<u>0</u>	<u>0</u>
Investments					
Equity investments in group entities	8	0	0	23.790	18.608
Other investments		54	54	0	0
		<u>54</u>	<u>54</u>	<u>23.790</u>	<u>18.608</u>
Total fixed assets		<u>87.421</u>	<u>103.392</u>	<u>23.790</u>	<u>18.608</u>
Current assets					
Inventories					
Raw materials and consumables		1.208	1.280	0	0
		<u>1.208</u>	<u>1.280</u>	<u>0</u>	<u>0</u>
Receivables					
Trade receivables		8.456	2.468	0	0
Receivables from group entities		716	816	20.008	19.705
Other receivables		3.745	5.635	0	0
Prepayments	9	402	441	0	0
Tax receivable		0	0	90	0
		<u>13.319</u>	<u>9.360</u>	<u>20.098</u>	<u>19.705</u>
Cash at bank and in hand		<u>420</u>	<u>4.190</u>	<u>0</u>	<u>0</u>
Total current assets		<u>14.947</u>	<u>14.830</u>	<u>20.098</u>	<u>19.705</u>
TOTAL ASSETS		<u>102.368</u>	<u>118.222</u>	<u>43.888</u>	<u>38.313</u>

Consolidated financial statements and parent company financial statements 1 January – 31 December

Balance sheet

DKK'000	Note	Group		Parent Company	
		2020	2019	2020	2019
EQUITY AND LIABILITIES					
Equity					
Contributed capital	10	714	714	714	714
Retained earnings		35.985	30.357	35.985	30.357
Total equity		36.699	31.071	36.699	31.071
Provisions					
Provisions for deferred tax	11	7.483	6.218	0	0
Total provisions		7.483	6.218	0	0
Liabilities other than provisions					
Non-current liabilities other than provisions					
Lease obligations	12	7.948	19.489	0	0
Other payables		2.106	852	0	0
		10.054	20.341	0	0
Current liabilities other than provisions					
Short-term part of long-term payables		11.978	19.552	0	0
Payables to other credit institutions	12	9.781	14.071	0	0
Trade payables		4.542	11.242	0	0
Payables to group entities		13.412	13.125	7.065	7.097
Income taxes		731	79	93	113
Other payables		7.688	2.523	31	32
		48.132	60.592	7.189	7.242
Total liabilities other than provisions		58.186	80.933	7.189	7.242
TOTAL EQUITY AND LIABILITIES		102.368	118.222	43.888	38.313

Consolidated financial statements and parent company financial statements 1 January – 31 December

Statement of changes in equity

	Group		
	Contri- buted capital	Re- tained earning	Total equity
DKK'000			
Equity at 1 January 2020	714	30.357	31.071
Transferred over the profit appropriation	0	5.791	5.791
Exchange rate adjustment, foreign subsidiary	0	-163	-163
Equity at 31 December 2020	714	35.985	36.699

	Parent Company		
	Contri- buted capital	Re- tained earning	Total equity
DKK'000			
Equity at 1 January 2020	714	30.357	31.071
Transferred over the profit appropriation	0	5.791	5.791
Exchange rate adjustment, foreign subsidiary	0	-163	-163
Equity at 31 December 2020	714	35.985	36.699

Consolidated financial statements and parent company financial statements 1 January – 31 December

Cash flow statement

DKK'000	Note	Group	
		2020	2019
Profit for the year		5.791	5.134
Adjustments	13	20.939	22.285
Changes in working capital	14	-3.508	25.196
Cash generated from operating activities before financials		23.222	52.615
Interest income and similar income received		451	1.536
Interest expenses and similar expenses paid		-2.269	-3.345
Income tax paid		483	-786
Cash flows from operating activities		21.887	50.020
Acquisition of property, plant and equipment		-7.944	-2.282
Disposal of property, plant and equipment		5.690	6.315
Acquisition of investments		0	-36
Disposals of investments		0	85
Cash flows from investing activities		-2.254	4.082
External financing:			
Repayment of payables to credit institutions		-445	-990
Arrangement of lease obligations		0	8.737
Repayment of lease obligations		-18.668	-28.401
Cash flows from financing activities		-19.113	-20.654
Cash flows for the year		520	33.448
Cash and cash equivalents at the beginning of the year		4.190	4.269
Short-term payables to credit institutions at the beginning of the year		-14.071	-47.598
Cash and cash equivalents at year end	15	-9.361	-9.881

Consolidated financial statements and parent company financial statements 1 January – 31 December

Notes

1 Accounting policies

The annual report of Silvasti Holding A/S for 2020 has been prepared in accordance with the provisions applying to reporting class C medium-sized entities under the Danish Financial Statements Act.

The accounting policies used in the preparation of the consolidated financial statements and the parent company financial statements are consistent with those of last year.

Consolidated financial statements

The consolidated financial statements comprise the Parent Company, Silvasti Holding A/S, and subsidiaries in which Silvasti Holding A/S directly or indirectly holds more than 50% of the votes or in some other way exercises control over. Entities in which the Group holds between 20% and 50% of the votes and exercises significant influence but not control are considered associates. A group chart is included on page 5.

All financial statements used for consolidation are prepared in accordance with the accounting policies of the group.

On consolidation, intra-group income and expenses, shareholdings, intra-group balances and dividends and realised and unrealised gains and losses on intra-group transactions are eliminated.

Equity investments in subsidiaries are set off against the proportionate share of subsidiaries' fair value of net assets and liabilities at the date of acquisition.

Foreign currency translation

On initial recognition, transactions denominated in foreign currencies are translated at the exchange rates at the transaction date. Foreign exchange differences arising between the exchange rates at the transaction date and the date of payment are recognised in the income statement as financial income or financial expenses.

Receivables, payables and other monetary items denominated in foreign currencies are translated at the exchange rates at the balance sheet date. The difference between the exchange rates at the balance sheet date and the date at which the receivable or payable arose or was recognised in the latest financial statements is recognised in the income statement as financial income or financial expenses.

Upon recognition of foreign subsidiaries and associates which are independent entities, the income statements are translated into Danish kroner at average exchange rates for the month, and balance sheet items are translated at the exchange rates at the balance sheet date. Foreign exchange differences arising upon translation of foreign subsidiaries' opening equity and results at the exchange rates at the balance sheet date are recognised directly in equity.

Foreign exchange adjustments of balances with independent foreign subsidiaries considered part of the total investment in the subsidiary are recognised directly in equity. Similarly, foreign exchange gains and losses on loans and derivative financial instruments taken out for the purpose of hedging investments in foreign subsidiaries are recognised directly in equity.

Upon recognition of foreign subsidiaries which are integrated entities, monetary items are translated at the exchange rates at the balance sheet date. Non-monetary items are translated at the exchange rates at the date of acquisition or the date of subsequent revaluations of the asset. Income statement items are translated at the exchange rates at the transaction date, whereas items derived from non-monetary items are translated at historical exchange rates for the non-monetary item.

Consolidated financial statements and parent company financial statements 1 January – 31 December

Notes

1 Accounting policies (continued)

Income statement

Gross profit/loss

Gross profit/loss comprises revenue, other operating income, property costs and raw materials consumables and other external expenses.

Revenue

Revenue from the sale of services, comprising transport, is recognised on a straight-line basis in the income statement as the services are provided.

Services based on time spent are recognised in revenue as the work is performed.

Revenue is measured at fair value of the agreed consideration excluding VAT and taxes charged on behalf of third parties. All discount granted are recognised in revenue.

Other operating income

Other operating income comprises items secondary to the activities of the Group, including gains on the disposal of intangible assets and property, plant and equipment.

Costs of raw materials and consumables

Costs of raw materials and consumables comprise raw materials and consumables used for the year as well as any changes in inventories, including any inventory wastage.

Write-downs of inventories of raw materials and consumables are also recognized under raw materials and consumables to the extent that these do not exceed normal write-downs.

Property costs

Property costs comprise costs relating to property management, including repair and maintenance costs, real estate property taxes, insurance, overhead costs and other costs.

Other external costs

Other external costs comprise costs relating to distribution, sales and advertising and administration, premises and bad debts to the extent that these do not exceed normal write-downs.

Staff costs

Staff costs comprise wages and salaries as well as other staff-related costs.

Other operating costs

Other operating costs comprise costs of a secondary nature in relation to the entities' activities, including costs relating to rental activities and losses on the sale of intangible assets and property, plant and equipment.

Consolidated financial statements and parent company financial statements 1 January – 31 December

Notes

1 Accounting policies (continued)

Income from equity investments in group entities

For equity investments in group entities that in the parent are measured using the equity method, the share of the entities' profit or loss is recognised in the income statement after elimination of unrealised intercompany profits and losses and less any goodwill amortisation and impairment losses.

Income from equity investments in group entities also comprise gains and losses on the sale of equity investments.

Financial income and expenses

Financial income and expenses comprise interest income and expense, financial costs regarding finance leases, gains and losses on payables and transactions denominated in foreign currencies etc. are recognised in financial income and expenses.

Tax on profit/loss for the year

Tax for the year comprises current tax for the year and changes in deferred tax, including changes in tax rates. The tax expense relating to the profit/loss for the year is recognised in the income statement at the amount attributable to the profit/loss for the year and directly in equity at the amount attributable to entries directly in equity

On payment of joint taxation contributions, current Danish corporation tax is allocated between the jointly taxed entities in proportion to their taxable income. Entities with tax losses receive joint taxation contributions from entities that have used the losses to reduce their own taxable profit.

Balance sheet

Fixed assets

Property, plant and equipment

Land and buildings, plant and machinery and fixtures and fittings, tools and equipment are measured at cost less accumulated depreciation and impairment losses.

Cost comprises the purchase price and any costs directly attributable to the acquisition until the date on which the asset is available for use. Indirect production overheads and borrowing costs are not recognised in cost.

Where individual components of an item of property, plant and equipment have different useful lives, they are accounted for as separate items, which are depreciated separately.

Consolidated financial statements and parent company financial statements 1 January – 31 December

Notes

1 Accounting policies (continued)

The basis of depreciation is cost less any projected residual value after the end of the useful life. Depreciation is provided on a straight-line basis over the estimated useful life. The estimated useful lives are as follows:

Buildings	5-50 years
Plant and machinery	1-10 years

The useful life and residual value are reassessed annually. Changes are treated as accounting estimates, and the effect on depreciation is recognised prospectively.

Land is not depreciated.

Gains and losses on the disposal of property, plant and equipment are stated as the difference between the selling price less selling costs and the carrying amount at the date of disposal. Gains and losses are recognised in the income statement as other operating income or other operating costs, respectively.

Leases

On initial recognition, leases for fixed assets that transfer substantially all risks and rewards incident to ownership to the Company (finance leases) are recognised in the balance sheet at the lower of fair value and the net present value of future lease payments. When the net present value is calculated, the interest rate implicit in the lease or the incremental borrowing rate is used as the discount factor. Assets held under finance leases are subsequently depreciated as the Company's other fixed assets.

The capitalised lease obligation is recognised in the balance sheet as a liability at amortised cost, allowing the interest element of the lease payment to be recognised in the income statement over the term of the lease.

All other leases are operating leases. Payments relating to operating leases and other leases are recognised in the income statement over the term of the lease. The Company's total obligation relating to operating leases and other leases is disclosed as contractual obligations and contingencies, etc.

Investments

Equity investments in group entities are measured at the proportionate share of the associates' net asset value calculated in accordance with the Group's accounting policies with deduction or addition of unrealised gains and losses and plus or minus the residual value of positive and negative goodwill calculated in accordance with the acquisition method.

Equity investments in group entities with negative net asset values are measured at DKK 0, and any receivables from these entities are written down to the extent that the receivables are deemed irrecoverable. To the extent that the Parent Company has a legal or constructive obligation to cover a negative balance exceeding the receivable, the residual amount is recognised as provisions.

Other receivables and deposits are recognised at amortised cost.

Impairment of fixed assets

The carrying amount of property, plant and equipment as well as equity investments in group entities is subject to an annual test for indications of impairment other than the decrease in value reflected by depreciation or amortisation.

Impairment tests are conducted of individual assets or groups of assets when there is an indication that they may be impaired. Write-down is made to the recoverable amount if this is lower than the carrying amount.

Consolidated financial statements and parent company financial statements 1 January – 31 December

Notes

1 Accounting policies (continued)

The recoverable amount is the higher of an asset's net selling price and its value in use. The value in use is determined as the present value of the forecast net cash flows from the use of the asset or the group of assets, including forecast net cash flows from the disposal of the asset or the group of assets after the end of the useful life.

Previously recognised write-downs are reversed when the basis for the write-down no longer exists.

Inventories

Inventories are measured at cost in accordance with the FIFO method. Where the net realisable value is lower than cost, inventories are written down to this lower value.

The cost of raw materials and consumables as well as goods for resale is determined as purchase prices plus expenses resulting directly from purchase.

The net realisable value of inventories is calculated as the sales amount less costs of completion and costs necessary to make the sale and is determined taking into account marketability, obsolescence and development in expected selling price.

Receivables

Receivables are measured at amortised cost, which usually corresponds to the nominal value, less write-downs for bad debts.

Write-down is made for bad debt losses where there is an objective indication that a receivable has been impaired. If there is an objective indication that an individual receivable has been impaired, write-down is made on an individual basis.

Deposits recognised under assets comprise deposits paid to the lessor under leases entered into by the Company.

Prepayments

Prepayments comprise prepayment of costs incurred relating to subsequent financial years.

Other equity investments

Other equity investments are measured at fair value in the balance sheet. For equity investments that are traded in an active market, fair value is equivalent to the market value at the balance sheet date. Other equity investments for which fair value cannot be determined reliably are measured at cost.

Cash at bank and in hand

Cash at bank and in hand comprise bank deposits and operating cash.

Equity

The net revaluation of equity investments in group entities is recognised in the financial statements of the Parent Company in the net revaluation reserve in equity according to the equity method to the extent that the carrying amount exceeds the cost.

Consolidated financial statements and parent company financial statements 1 January – 31 December

Notes

1 Accounting policies (continued)

Corporation tax and deferred tax

Current tax payable and receivable is recognised in the balance sheet as tax computed on the taxable income for the year, adjusted for tax on the taxable income of prior years and for tax paid on account.

Joint taxation contributions payable and receivable are recognised as income tax under receivables or payables in the balance sheet.

Deferred tax is measured using the balance sheet liability method on all temporary differences between the carrying amount and the tax value of assets and liabilities measured on the planned use of the asset or settlement of the liability, respectively. However, deferred tax is not recognised on temporary differences relating to goodwill non-deductible for tax purposes and on office premises and other items where the temporary differences arise at the date of acquisition without affecting either profit/loss or taxable income.

Deferred tax assets, including the tax value of tax loss carryforwards, are recognised at the expected value of their utilisation within the foreseeable future; either as a set-off against tax on future income or as a set-off against deferred tax liabilities in the same legal tax entity. Any deferred net assets are measured at net realisable value.

Deferred tax is measured in accordance with the tax rules and at the tax rates applicable at the balance sheet date when the deferred tax is expected to crystallise as current tax. Changes in deferred tax as a result of changes in tax rates are recognised in the income statement or equity, respectively.

Liabilities other than provisions

Financial liabilities are recognised at the date of borrowing at cost, corresponding to the proceeds received less transaction costs paid. In subsequent periods, the financial liabilities are measured at amortised cost, corresponding to the capitalised value using the effective interest rate. Accordingly, the difference between cost and the nominal value is recognised in the income statement over the term of the loan together with interest expenses.

Finance lease obligation comprise the capitalised residual lease obligation of finance leases.

Other liabilities are measured at net realisable value.

Cash flow statement

The cash flow statement shows the Group's cash flows from operating, investing and financing activities for the year, the year's changes in cash and cash equivalents as well as the Group's cash and cash equivalents at the beginning and end of the year.

The cash flow effect of acquisitions and divestment of entities is shown separately in cash flows from investing activities. Cash flows relating to acquired entities are recognised in the cash flow statement from the date of acquisition, and cash flows relating to divested entities are recognised up to the date of divestment.

Consolidated financial statements and parent company financial statements 1 January – 31 December

Notes

1 Accounting policies (continued)

Cash flows from operating activities

Cash flows from operating activities are calculated as the profit/loss for the year adjusted for non-cash operating items, changes in working capital and corporation tax paid.

Cash flows from investing activities

Cash flows from investing activities comprise payments in connection with acquisitions and disposals of entities and activities, intangible assets, property, plant and equipment and investments.

Cash flows from financing activities

Cash flows from financing activities comprise changes in size or composition of the Company's contributed capital and costs in this respect as well as the raising of loans, instalments on interest-bearing debt and distribution of dividends to owners.

Consolidated financial statements and parent company financial statements 1 January – 31 December

Notes

DKK'000	Group		Parent Company	
	2020	2019	2020	2019
2 Staff costs				
Wages and salaries	36.934	27.259	0	0
Pensions	3.987	2.952	0	0
Other social security costs	416	1.351	0	0
Other staff costs	3.695	5.386	0	0
	<u>45.032</u>	<u>36.948</u>	<u>0</u>	<u>0</u>
Average number of full-time employees	<u>73</u>	<u>70</u>	<u>0</u>	<u>0</u>
In accordance with section 98b(3) of the Danish Financial Statements Act, remuneration of the Executive Board and the Board of Directors is not disclosed.				
3 Financial income				
Interest income from group entities	28	0	783	756
Foreign exchange gains	209	1.371	0	0
Other interest income	156	159	0	0
Other financial income	58	6	57	2
	<u>451</u>	<u>1.536</u>	<u>840</u>	<u>758</u>
4 Financial expenses				
Interest expense to group entities	0	475	192	247
Foreign exchange losses	349	335	0	0
Other interest expense	1.920	2.520	104	22
Other financial expenses	0	15	0	0
	<u>2.269</u>	<u>3.345</u>	<u>296</u>	<u>269</u>

Consolidated financial statements and parent company financial statements 1 January – 31 December

Notes

DKK'000	Group		Parent Company	
	2020	2019	2020	2019
5 Tax on profit for the year				
Current tax for the year	-94	79	3	113
Deferred tax adjustment for the year	-1.265	1.596	-14	0
Adjustment of tax in respect of previous years	-23	-31	0	-31
	<u>-1.382</u>	<u>1.644</u>	<u>-11</u>	<u>82</u>
6 Proposed profit appropriation				
Retained earnings	<u>5.791</u>	<u>5.134</u>	<u>5.791</u>	<u>5.134</u>
7 Property, plant and equipment				
		Group		
		Land and buildings	Plant and machinery	Total
DKK'000				
Cost at 1 January 2020		8.404	215.594	223.998
Additions		60	7.884	7.944
Disposals		0	-16.302	-16.302
Cost at 31 December 2020		<u>8.464</u>	<u>207.176</u>	<u>215.640</u>
Depreciation and impairment losses at 1 January 2020		-1.558	-119.102	-120.660
Depreciation		-148	-18.077	-18.225
Reversed depreciation and impairment losses		0	10.612	10.612
Depreciation and impairment losses at 31 December 2020		<u>-1.706</u>	<u>-126.567</u>	<u>-128.273</u>
Carrying amount at 31 December 2020		<u>6.758</u>	<u>80.609</u>	<u>87.367</u>
			Plant and machinery	
			Group	Parent Company
DKK'000				
Assets held under finance leases			<u>54.190</u>	<u>0</u>

Consolidated financial statements and parent company financial statements 1 January – 31 December

Notes

8 Investments

	Group		Parent Company	
	Equity invest-ments in group entities	Other invest-ments	Equity invest-ments in group entities	Other invest-ments
DKK'000				
Cost at 1 January	0	54	29.308	0
Additions	0	0	0	0
Disposals	0	0	0	0
Cost at 31 December	0	54	29.308	0
Depreciation and impairment losses at 1 January	0	0	-10.700	0
Foreign currency translation adjustment of foreign entities	0	0	-161	0
Profit/loss for the year from equity investments	0	0	5.343	0
Depreciation and impairment losses at 31 December	0	0	-5.518	0
Carrying amount at 31 December	0	54	23.790	0

Name/legal form	Registered office	Equity interest	Equity* DKK'000	Profit/loss for the year* DKK'000
Subsidiaries:				
Silvasti Ejendomme ApS	Jammerbugt	100%	1.220	112
Silvasti Finans ApS	Jammerbugt	100%	7.904	1.553
Silvasti Transport A/S	Jammerbugt	100%	14.666	3.678
Total			23.790	5.343

9 Prepayments

	Group		Parent Company	
	2020	2019	2020	2019
DKK'000				
Prepayments	402	441	0	0

Consolidated financial statements and parent company financial statements 1 January – 31 December

Notes

10 Contributed capital

Contributed capital consists of:

A shares, 714 shares of nom. DKK 1,000 each.

All shares rank equally.

11 Deferred tax

DKK'000	Group		Parent Company	
	2020	2019	2020	2019
Deferred tax at 1 January	6.218	4.622	0	0
Deferred tax adjustment for the year in the income statement	1.265	1.596	0	0
	<u>7.483</u>	<u>6.218</u>	<u>0</u>	<u>0</u>

12 Non-current liabilities other than provisions

Liabilities other than provisions can be specified as follows:

DKK'000	2020	2019
Lease obligations:		
0-1 years	11.978	19.106
1-5 years	7.617	18.872
>5 years	331	617
	<u>19.926</u>	<u>38.595</u>
Other payables:		
0-1 years	7.688	2.253
1-5 years	0	0
>5 years	2.106	852
	<u>9.794</u>	<u>3.105</u>
Total liabilities other than provisions	<u>29.720</u>	<u>41.700</u>

Consolidated financial statements and parent company financial statements 1 January – 31 December

Notes

DKK'000	Group	
	2020	2019
13 Other adjustments		
Other operating income	-176	-36
Depreciation and impairment losses of property, plant and equipment	18.225	17.964
Other operating costs	676	772
Other financial income	-451	-1.536
Financial expenses	2.269	3.345
Tax on profit for the year	1.382	1.644
Other adjustments	-986	132
	<u>20.939</u>	<u>22.285</u>
14 Changes in working capital		
Change in inventories	72	-197
Change in receivables	-3.586	34.654
Change in other payables relating to operating activities	6	-9.261
	<u>-3.508</u>	<u>25.196</u>
15 Cash and cash equivalents		
Cash and cash equivalents at 31 December comprise:		
Cash at bank and in hand	420	4.190
Short-term payables to credit institutions	-9.781	-14.071
Cash and cash equivalents at 31 December	<u>-9.361</u>	<u>-9.881</u>

Consolidated financial statements and parent company financial statements 1 January – 31 December

Notes

16 Contractual obligations, contingencies, etc.

Group

Lease obligations

Lease obligations of DKK 19,926 thousand are attributable to the ownership of tangible assets with a total value of DKK 54,190 thousand.

Parent

Recourse guarantee obligations

The Company has provided a guarantee for debt to credit institutions of group entities Silvasti Transport A/S, Silvasti Ejendomme ApS and Silvasti Finans ApS' engagement with Arbejdernes Landsbank, which amounted to DKK 9,781 thousand at the balance sheet date.

The Company has provided a letter of subordination to Arbejdernes Landsbank regarding receivable from Silvasti Finans ApS.

The Company has submitted a declaration of support to the subsidiary Silvasti Finans ApS, Silvasti Transport A/S and Silvasti Ejendomme ApS until 31 December 2021.

Other contingent liabilities

The Group's Danish entities are jointly and severally liable for tax on the Group's jointly taxed income and for certain withholding taxes such as dividend tax and royalty tax as well as for the joint registration for VAT. The jointly taxed entities' total net liability to SKAT amounted to DKK 93 thousand at 31 December 2020. Any subsequent corrections of the taxable income subject to joint taxation or withholding taxes on dividends, etc. may entail an increase in the entities' liability. The Group as a whole is not liable to any other parties.

The Group's Danish entities are jointly and severally liable for the joint registration for VAT.

17 Charges and security

Group

For collateral for debt to credit institutions of DKK 9,781 thousand, the Company has issued a company pledge of DKK 40,000 thousand. At 31 December 2020, the company pledge includes a total of DKK 7,781 thousand consisting of fixed assets, debtors and inventories.

The Group has issued mortgage deeds registered to the mortgagor in the amount of DKK 6,450 thousand secured upon land and buildings as collateral for own and group entities' debt to credit institutions. Payables to credit institutions constituted DKK 9,781 thousand at the balance sheet date. The carrying amount of the mortgaged assets totals DKK 6,114 thousand.

For collateral of invoice credit at 31 December 2020, mortgages of DKK 5,397 thousand have been provided on debtors with a carrying amount of DKK 6,188 thousand.

Consolidated financial statements and parent company financial statements 1 January – 31 December

Notes

18 Related parties

Silvasti Holding A/S' related parties comprise the following:

Control

Kuljetusliike Ville Silvasti Oy, Lekatie 2 40320 Jyväskylä, Finland .

Kuljetusliike Ville Silvasti Oy holds the majority of the contributed capital in the Company.

Related party transactions

DKK'000

2020

Group

Sale of goods to Parent Company

72.120

Balances and interest with related parties are disclosed in the balance sheet and notes.