

Swire Energy Services Holding A/S

Lyshøjen 4, st. tv., 8520 Lystrup

CVR no. 25 55 89 36

Annual report

for the period 1 May - 31 December 2021

Approved at the Company's annual general meeting on 30 June 2022

Chair of the meeting:

.....
Martin Humphrey Shaw

Contents

Statement by the Board of Directors and the Executive Board	2
Independent auditor's report	3
Management's review	5
Consolidated financial statements and parent company financial statements 1 May - 31 December	11
Income statement	11
Balance sheet	12
Statement of changes in equity	14
Cash flow statement	15
Notes to the financial statements	16

Statement by the Board of Directors and the Executive Board

Today, the Board of Directors and the Executive Board have discussed and approved the annual report of Swire Energy Services Holding A/S for the financial year 1 May - 31 December 2021.

The annual report is prepared in accordance with the Danish Financial Statements Act.

In our opinion, the consolidated financial statements and the parent company financial statements give a true and fair view of the financial position of the Group and the Company at 31 December 2021 and of the results of the Group's and the Company's operations and of the consolidated cash flows for the financial year 1 May - 31 December 2021.

Further, in our opinion, the Management's review gives a fair review of the development in the Group's and the Company's operations and financial matters and the results of the Group's and the Company's operations and financial position.

We recommend that the annual report be approved at the annual general meeting.

Lystrup, 30 June 2022
Executive Board:

.....
Sabine Gabriele Weth
General Manager

Board of Directors:

.....
Manfred Vonlanthen
Chair

.....
Martin Humphrey Shaw

.....
Sabine Gabriele Weth

Independent auditor's report

To the shareholder of Swire Energy Services Holding A/S

Opinion

We have audited the consolidated financial statements and the parent company financial statements of Swire Energy Services Holding A/S for the financial year 1 May - 31 December 2021, which comprise income statement, balance sheet, statement of changes in equity and notes, including accounting policies, for the Group and the Parent Company, and a consolidated cash flow statement. The consolidated financial statements and the parent company financial statements are prepared in accordance with the Danish Financial Statements Act.

In our opinion, the consolidated financial statements and the parent company financial statements give a true and fair view of the financial position of the Group and the Parent Company at 31 December 2021, and of the results of the Group's and Parent Company's operations as well as the consolidated cash flows for the financial year 1 May - 31 December 2021 in accordance with the Danish Financial Statements Act.

Basis for opinion

We conducted our audit in accordance with International Standards on Auditing (ISAs) and the additional requirements applicable in Denmark. Our responsibilities under those standards and requirements are further described in the "Auditor's responsibilities for the audit of the consolidated financial statements and the parent Company financial statements" (hereinafter collectively referred to as "the financial statements") section of our report. We believe that the audit evidence we have obtained is sufficient and appropriate to provide a basis for our opinion.

Independence

We are independent of the Group in accordance with the International Ethics Standards Board for Accountants' International Code of Ethics for Professional Accountants (IESBA Code) and the additional ethical requirements applicable in Denmark, and we have fulfilled our other ethical responsibilities in accordance with these requirements and the IESBA Code.

Management's responsibilities for the financial statements

Management is responsible for the preparation of consolidated financial statements and parent company financial statements that give a true and fair view in accordance with the Danish Financial Statements Act and for such internal control as Management determines is necessary to enable the preparation of financial statements that are free from material misstatement, whether due to fraud or error.

In preparing the financial statements, Management is responsible for assessing the Group's and the Parent Company's ability to continue as a going concern, disclosing, as applicable, matters related to going concern and using the going concern basis of accounting in preparing the financial statements unless Management either intends to liquidate the Group or the Parent Company or to cease operations, or has no realistic alternative but to do so.

Auditor's responsibilities for the audit of the financial statements

Our objectives are to obtain reasonable assurance as to whether the financial statements as a whole are free from material misstatement, whether due to fraud or error and to issue an auditor's report that includes our opinion. Reasonable assurance is a high level of assurance, but is not a guarantee that an audit conducted in accordance with ISAs and the additional requirements applicable in Denmark will always detect a material misstatement when it exists. Misstatements can arise from fraud or error and are considered material if, individually or in the aggregate, they could reasonably be expected to influence the economic decisions of users taken on the basis of the financial statements.

As part of an audit conducted in accordance with ISAs and the additional requirements applicable in Denmark, we exercise professional judgement and maintain professional scepticism throughout the audit. We also:

Independent auditor's report

- ▶ Identify and assess the risks of material misstatement of the financial statements, whether due to fraud or error, design and perform audit procedures responsive to those risks and obtain audit evidence that is sufficient and appropriate to provide a basis for our opinion. The risk of not detecting a material misstatement resulting from fraud is higher than for one resulting from error, as fraud may involve collusion, forgery, intentional omissions, misrepresentations or the override of internal control.
- ▶ Obtain an understanding of internal control relevant to the audit in order to design audit procedures that are appropriate in the circumstances, but not for the purpose of expressing an opinion on the effectiveness of the Group's and the Parent Company's internal control.
- ▶ Evaluate the appropriateness of accounting policies used and the reasonableness of accounting estimates and related disclosures made by Management.
- ▶ Conclude on the appropriateness of Management's use of the going concern basis of accounting in preparing the financial statements and, based on the audit evidence obtained, whether a material uncertainty exists related to events or conditions that may cast significant doubt on the Group's and the Parent Company's ability to continue as a going concern. If we conclude that a material uncertainty exists, we are required to draw attention in our auditor's report to the related disclosures in the financial statements or, if such disclosures are inadequate, to modify our opinion. Our conclusions are based on the audit evidence obtained up to the date of our auditor's report. However, future events or conditions may cause the Group and the Parent Company to cease to continue as a going concern.
- ▶ Evaluate the overall presentation, structure and contents of the financial statements, including the note disclosures, and whether the financial statements represent the underlying transactions and events in a manner that gives a true and fair view.
- ▶ Obtain sufficient appropriate audit evidence regarding the financial information of the entities or business activities within the Group to express an opinion on the consolidated financial statements. We are responsible for the direction, supervision and performance of the group audit. We remain solely responsible for our audit opinion.

We communicate with those charged with governance regarding, among other matters, the planned scope and timing of the audit and significant audit findings, including any significant deficiencies in internal control that we identify during our audit.

Statement on the Management's review

Management is responsible for the Management's review.

Our opinion on the financial statements does not cover the Management's review, and we do not express any form of assurance conclusion thereon.

In connection with our audit of the financial statements, our responsibility is to read the Management's review and, in doing so, consider whether the Management's review is materially inconsistent with the financial statements or our knowledge obtained during the audit, or otherwise appears to be materially misstated.

Moreover, it is our responsibility to consider whether the Management's review provides the information required under the Danish Financial Statements Act.

Based on the work we have performed, we conclude that the Management's review is in accordance with the financial statements and has been prepared in accordance with the requirements of the Danish Financial Statements Act. We did not identify any material misstatement of the Management's review.

Aarhus, 30 June 2022
 EY Godkendt Revisionspartnerselskab
 CVR no. 30 70 02 28

Tom B. Lassen
 State Authorised Public Accountant
 mne24820

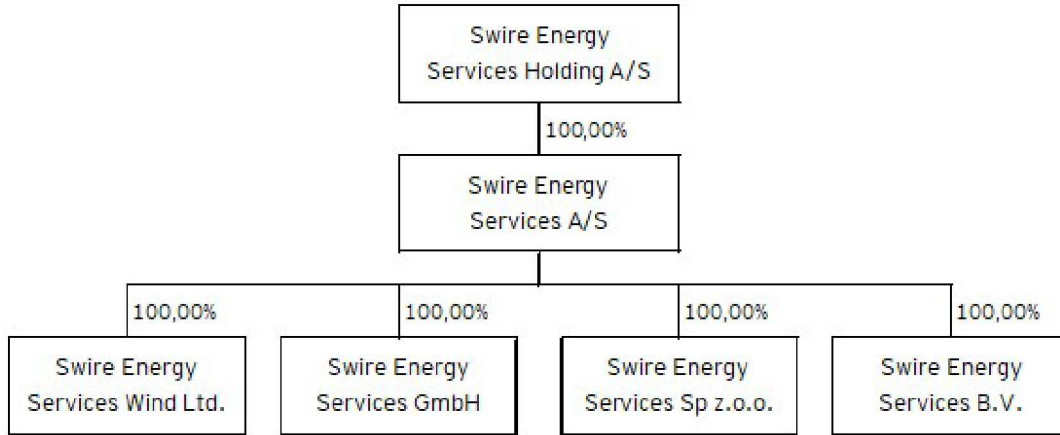
Management's review

Company details

Name	Swire Energy Services Holding A/S
Address, Postal code, City	Lyshøjen 4, st. tv., 8520 Lystrup
CVR no.	25 55 89 36
Established	13 December 2013
Registered office	Aarhus
Financial year	1 May - 31 December
Website	www.swirees.com
E-mail	contact.wind.dk@swirees.com
Telephone	+45 70 10 10 22
Board of Directors	Manfred Vonlanthen, Chair Martin Humphrey Shaw Sabine Gabriele Weth
Executive Board	Sabine Gabriele Weth, General Manager
Auditors	EY Godkendt Revisionspartnerselskab Værkmestergade 25, P.O. Box 330, 8100 Aarhus C, Denmark

Management's review

Group chart



Management's review

Financial highlights for the Group

DKK'000	2021 8 months	2020/21 12 months	2019 12 mdr.(months)	2018 12 mdr.(months)	2017 12 mdr.(months)
Key figures					
Revenue	223,920	298,961	382,080	529,695	469,544
Earnings before interest, taxes, depreciation and amortisation (EBITDA)	-13,999	4,112	2,686	17,723	9,308
Profit before interest and tax (EBIT)	-22,969	-29,499	-56,474	-4,557	-7,916
Operating profit/loss	-25,114	-31,177	-56,390	-5,263	-7,338
Net financials	-14,429	-8,526	-14,873	-9,591	-10,307
Profit/loss for the year	-46,931	-36,136	-67,811	-16,815	-17,418
Total assets	178,077	180,416	203,541	300,646	296,551
Equity	-15,832	31,053	26,671	93,949	110,787
Cash flows from operating activities	-73,782	11,244	2,143	3,729	58,639
Net cash flows from investing activities	-6,146	-3,904	-5,704	-2,051	-4,246
Cash flows from financing activities	79,696	-14,774	-3,999	12,477	-56,407
Total cash flows	-232	-7,434	-7,560	14,155	-2,014
Financial ratios					
Operating margin	-10.3%	-9.9%	-14.8%	-0.9 %	-1.7 %
Gross margin	73.8%	76.3%	83.9%	76.8%	71.6%
EBITDA-margin	-6.3%	1.4%	0.7%	3.3%	2.0%
Return on assets	-14.0%	-16.2%	-22.4%	-1.8%	-2.3%
Equity ratio	-8.9%	17.2%	13.1%	31.2%	37.4%
Return on equity	-616.7%	-125.2%	-112.4%	-16.4%	-14.6%
Average number of full-time employees					
	241	268	418	553	466

The financial ratios stated under "Financial highlights" have been calculated as follows:

Ordinary operating profit/loss	Profit/loss before financial items adjusted for other operating income and other operating expenses
Operating margin	$\frac{\text{Operating profit/loss (EBIT)} \times 100}{\text{Revenue}}$
Gross margin	$\frac{\text{Gross profit/loss} \times 100}{\text{Revenue}}$
EBITDA-margin	$\frac{\text{Earnings before interest, taxes and amortisations (EBITDA)} \times 100}{\text{Revenue}}$
Return on assets	$\frac{\text{Profit/loss from operating activities} \times 100}{\text{Average assets}}$
Equity ratio	$\frac{\text{Equity, year-end} \times 100}{\text{Total equity and liabilities, year-end}}$
Return on equity	$\frac{\text{Profit/loss after tax} \times 100}{\text{Average equity}}$

Management's review

Business review

The Group's main activities are in the utility sector, primarily in the wind industries, which it carries out through the operating companies Swire Energy Services A/S. The activities consist of installation, construction and services, as well as all other activities which, at the discretion of the Board of Directors, are related thereto.

The Parent Company's objective is to hold shares in wholly or partly owned companies.

Financial review

The income statement for 2021 shows a loss of DKK 46,931 thousand against a loss of DKK 36,136 thousand last year, and the group's balance sheet at 31 December 2021 shows a negative equity of DKK 15,832 thousand. The Group's revenue amounted to DKK 223,920 thousand (8 months) against DKK 298,961 thousand (12 months) last year, which is in the range of what was expected last year.

The results of operation have continued to be impacted from COVID-19 due to restrictions on movement of personnel and impacts to the global supply chain. This has created additional extraordinary operational costs and delays to projects, resulting in much lower EBITDA than expected.

COVID-19 had continued an impact across the industry and markets the company operates in.

The management considers the result was unsatisfactory due to the various challenges the business faced.

Non-financial matters

Corporate governance

Swire Energy Services Holding A/S owns 100% of Swire Energy Services A/S. Swire Energy Services Holding A/S is owned 100% by Swire Energy Services (Holdings) Limited. As a consequence, Swire Energy Services (Holdings) Limited is an indirect co-owner of Swire Energy Services A/S.

Financial risks and use of financial instruments

Risk assessment and risk management

The Board of Directors and the Executive Board determine and approve overall policies, procedures and controls of important areas in the day-to-day operation of the Company. The foundation for this is a clear organisational structure, clear guidelines, authorisation, certification procedures and segregation of duties.

The Board of Directors and the Executive Board regularly (at least annually) assess significant risks and internal controls in connection with the Company's activities. On this basis, ongoing actions are evaluated and adopted to eliminate and/or reduce risks, including business and financial risks, based on a Risk Management policy.

As part of the risk assessment, the Board of Directors and the Executive Board annually assess the risk of fraud and the measures taken to reduce and/or eliminate these risks.

Business and financial risks

General risks

The Group is not exposed to any specific risks which are not common for the type of business activities performed by the Group, except for currency risks.

It is Group policy not to engage in speculation of financial risks. The Group's policy focuses only on the management and reduction of the financial risks that are a direct consequence of the Group's operations.

Management's review

Currency risks

The Group has international activities, and some countries have volatile currencies, which expose the Group to currency risks.

Impact on the external environment

The Group focuses on the environmental impact from the Group's activities. The Group is environmentally certified to ISO 14001:2015. An environmental policy and targets have been laid down that are to ensure continuous focus on the area and on improvements.

The Group focuses on security and working environment driven by the Group's activities. The Group is certified to ISO 45001:2018. A working environment policy and targets have been laid down that focus on job satisfaction, low sickness absence and prevention of work-related injuries.

A working environment organisation (AMO) has been established in accordance with the Danish regulations.

In order to foster that the course of disease/course of injury is as short as possible, the Group has a permanent employee health insurance that covers a range of diseases and injuries as well as consequences therefrom. Heart defibrillators are available at all group locations.

We also recognise that to mitigate damaging climate change the world needs to act swiftly and decisively to reduce carbon emissions, therefore, we have made the commitment reach net-zero by 2030.

It is the policy of Swire Energy Services to:

- ▶ Be a leader in sustainable development in the industries in which we operate;
- ▶ Reduce our carbon footprint by adopting industry best practices, improving energy efficiency, and increasing the use of renewable energy;
- ▶ Turn today's waste into a resource for tomorrow, contributing to the creation of a circular economy, where waste materials are no longer simply thrown away, but are retained and reused as a future resource;
- ▶ Use water responsibly and sustainably and to protect watershed;
- ▶ Source materials responsibly and sustainably, including ensuring that our suppliers meet our sustainability goals;
- ▶ Bring value to the communities in which we operate and respect their culture and heritage;
- ▶ Encourage our staff to engage actively in sustainable development matters at work and in the community;
- ▶ Monitor the company's performance and report regularly.

Statutory CSR report

The statutory CSR report is published on the Group's website:

Sustainability Report 2021

Link: <https://d1nny53tfaeic.cloudfront.net/Sustainable-Development-Report-2021.pdf>

Account of the gender composition of Management, cf. §99b

The Group has a target number for representation on the Company's Board of Directors and a policy for the gender composition at other levels of management in the Group. The aim is that approx. 25% of board members are to be made up of women within 2023. The Board of Directors currently has 3 members: 2 men and 1 women. The Board of Directors will primarily be composed of members based on experience and skills, and as there have not been any candidates among the underrepresented gender with the requested qualifications, there have not been any replacements on the Board of Directors.

The Group's policy for the gender composition at other levels of management aims for 20% female managers. The other levels of management currently have 11 members: 5 men and 6 woman. The other levels of management will primarily be composed of members based on experience and skills.

Management's review

To increase the amount of the underrepresented gender in management positions, the Group ensures that there are representatives of both genders among the candidates in the last rounds of hiring processes and encourages both genders to apply internally for management positions.

Data ethics

Swire Energy Services Holding A/S does not consider it relevant to draw up a policy for data ethics. In this connection, the Company attaches importance to the fact that the Company only to a limited extent collects and processes data and does not use new technologies as part of the Company's main activity, and does not itself or through external suppliers carry out specific data analyses, evaluations or segmentations.

Events after the balance sheet date

Subsequent to the financial year-end, the Company has re-establishment the equity in connection with debt forgiveness (danish: koncerntilskud). The Company has received debt forgiveness of DKK 70,000,000 from the Company's parent company, Swire Energy Services (Holdings) Limited. The debt forgiveness of given through debt forgiveness of parts of the group balances with the parent company to unrestricted equity.

Outlook

The impacts of COVID-19 have had a continued effect on operations in 2022, with restrictions on personnel travelling and requirements to quarantine, in addition to impacts on the supply chain disrupting the availability of equipment for the Group and customers, with customers then deferring work. The Group expects next year to report revenue and EBITDA at similar levels as this year. Inflationary pressure across the globe have created challenges for cost and availability of equipment and services. The Wind market though is robust in the face of these challenges and with global installed capacity of wind turbines increasing, the outlook for the future increases in installed capacity growing annually the Group expects to report an increased revenue and for future years with associated improvements in profitability.

Consolidated financial statements and parent company financial statements 1 May - 31 December

Income statement

Note	DKK	Group		Parent company	
		2021 8 months	2020/21 12 months	2021 8 months	2020/21 12 months
3	Revenue	223,919,595	298,961,299	0	0
	Cost of sales	-40,713,932	-36,083,769	0	0
	Other operating income	2,164,644	1,825,444	0	0
	Other external expenses	-20,220,109	-36,466,658	-3,209,900	-27,792
	Gross profit	165,150,198	228,236,316	-3,209,900	-27,792
4	Staff costs	-179,129,608	-223,976,091	0	0
	Amortisation/depreciation and impairment of intangible assets and property, plant and equipment	-8,970,015	-33,611,931	0	0
	Other operating expenses	-19,858	-147,790	0	0
	Profit/loss before net financials	-22,969,283	-29,499,496	-3,209,900	-27,792
	Income from investments in group enterprises	0	0	-26,649,771	-30,412,107
5	Financial income	1,272	2,011,878	10,698	0
6	Financial expenses	-14,430,565	-10,537,426	-10,680,850	-7,310,781
	Profit/loss before tax	-37,398,576	-38,025,044	-40,529,823	-37,750,680
7	Tax for the year	-9,532,847	1,888,865	-6,401,600	1,614,500
	Profit/loss for the year	-46,931,423	-36,136,179	-46,931,423	-36,136,180

Consolidated financial statements and parent company financial statements 1 May - 31 December

Balance sheet

Note	DKK	Group		Parent company	
		2021	2020/21	2021	2020/21
		ASSETS			
		Fixed assets			
8	Intangible assets				
	Acquired intangible assets	1,761,407	2,330,628	0	0
	Group goodwill	100,244,482	106,532,617	0	0
		<u>102,005,889</u>	<u>108,863,245</u>	<u>0</u>	<u>0</u>
9	Property, plant and equipment				
	Fixtures and fittings, other plant and equipment	10,398,347	7,708,242	0	0
	Leasehold improvements	239,096	285,193	0	0
		<u>10,637,443</u>	<u>7,993,435</u>	<u>0</u>	<u>0</u>
10	Investments				
	Investments in group enterprises	0	0	59,842,266	86,445,442
	Deposits	625,373	512,397	0	0
		<u>625,373</u>	<u>512,397</u>	<u>59,842,266</u>	<u>86,445,442</u>
	Total fixed assets	<u>113,268,705</u>	<u>117,369,077</u>	<u>59,842,266</u>	<u>86,445,442</u>
	Non-fixed assets				
	Inventories				
	Finished goods and goods for resale	7,307,533	5,572,323	0	0
		<u>7,307,533</u>	<u>5,572,323</u>	<u>0</u>	<u>0</u>
	Receivables				
	Trade receivables	36,487,539	19,043,640	0	0
11	Work in progress	9,611,000	13,299,132	0	0
	Receivables from group enterprises	0	0	51,375,691	0
15	Deferred tax assets	0	10,094,800	0	6,401,600
	Corporation tax receivable	0	212,888	0	212,888
	Other receivables	9,466,826	7,683,117	0	0
12	Prepayments	588,934	5,562,175	0	0
		<u>56,154,299</u>	<u>55,895,752</u>	<u>51,375,691</u>	<u>6,614,488</u>
	Cash	<u>1,346,809</u>	<u>1,579,080</u>	<u>0</u>	<u>0</u>
	Total non-fixed assets	<u>64,808,641</u>	<u>63,047,155</u>	<u>51,375,691</u>	<u>6,614,488</u>
	TOTAL ASSETS	<u>178,077,346</u>	<u>180,416,232</u>	<u>111,217,957</u>	<u>93,059,930</u>

Consolidated financial statements and parent company financial statements 1 May - 31 December

Balance sheet

Note	DKK	Group		Parent company	
		2021	2020/21	2021	2020/21
		EQUITY AND LIABILITIES			
		Equity			
13	Share capital	5,281,834	5,299,999	5,281,834	5,299,999
	Translation reserve	27,509	-19,086	0	0
	Retained earnings	-21,141,107	25,772,151	-21,113,598	25,753,065
	Total equity	-15,831,764	31,053,064	-15,831,764	31,053,064
		Liabilities other than provisions			
16	Non-current liabilities other than provisions				
	Bank debt	0	9,000,000	0	9,000,000
	Lease liabilities	2,739,000	4,712,798	0	0
	Subordinate loan capital	0	20,000,000	0	20,000,000
	Other payables	16,948,172	18,327,226	0	0
		19,687,172	52,040,024	0	29,000,000
		Current liabilities other than provisions			
16	Short-term part of long-term liabilities other than provisions	5,251,919	6,505,609	0	4,500,000
	Bank debt	10,896,693	27,895,418	0	0
11	Work in progress	1,488,000	3,613,000	0	0
	Trade payables	7,942,211	18,665,069	14,999	0
	Payables to group enterprises	127,034,722	0	127,034,722	15,502,490
	Corporation tax payable	565,980	236,601	0	0
	Other payables	21,042,413	40,407,447	0	13,004,376
		174,221,938	97,323,144	127,049,721	33,006,866
	Total liabilities other than provisions	193,909,110	149,363,168	127,049,721	62,006,866
	TOTAL EQUITY AND LIABILITIES	178,077,346	180,416,232	111,217,957	93,059,930

- 1 Accounting policies
- 2 Special items
- 14 Treasury shares
- 17 Contractual obligations and contingencies, etc.
- 18 Collateral
- 19 Related parties
- 20 Fee to the auditors appointed by the Company in general meeting
- 21 Appropriation of profit/loss

Consolidated financial statements and parent company financial statements 1 May - 31 December

Statement of changes in equity

		Group			
Note	DKK	Share capital	Translation reserve	Retained earnings	Total
	Equity at 1 May 2020	4,231,666	0	22,439,438	26,671,104
	Capital increase	1,068,333	0	39,979,131	41,047,464
	Transfer through appropriation of loss	0	0	-36,136,179	-36,136,179
	Adjustment of investments through foreign exchange adjustments	0	-19,086	0	-19,086
	Adjustment of hedging instruments at fair value	0	0	-654,739	-654,739
	Tax on items recognised directly in equity	0	0	144,500	144,500
	Equity at 1 May 2021	5,299,999	-19,086	25,772,151	31,053,064
	Capital reduction	-18,165	0	18,165	0
	Transfer through appropriation of loss	0	0	-46,931,423	-46,931,423
	Adjustment of investments through foreign exchange adjustments	0	46,595	0	46,595
	Equity at 31 December 2021	5,281,834	27,509	-21,141,107	-15,831,764

		Parent company		
Note	DKK	Share capital	Retained earnings	Total
	Equity at 1 May 2020	4,231,666	22,439,439	26,671,105
	Capital increase	1,068,333	39,979,131	41,047,464
21	Transfer, see "Appropriation of profit/loss"	0	-36,136,180	-36,136,180
	Adjustment of investments through foreign exchange adjustments	0	-529,325	-529,325
	Equity at 1 May 2021	5,299,999	25,753,065	31,053,064
	Capital reduction	-18,165	18,165	0
21	Transfer, see "Appropriation of profit/loss"	0	-46,931,423	-46,931,423
	Adjustment of investments through foreign exchange adjustments	0	46,595	46,595
	Equity at 31 December 2021	5,281,834	-21,113,598	-15,831,764

Consolidated financial statements and parent company financial statements 1 May - 31 December

Cash flow statement

Note	DKK	Group	
		2021 8 months	2020/21 12 months
	Profit/loss for the year	-46,931,423	-36,136,179
22	Adjustments	33,500,958	42,403,324
	Cash generated from operations (operating activities)	-13,430,465	6,267,145
23	Changes in working capital	-45,922,548	15,786,688
	Cash generated from operations (operating activities)	-59,353,013	22,053,833
	Interest received, etc.	1,272	11,519
	Interest paid, etc.	-14,430,565	-10,531,079
	Income taxes paid	0	-290,539
	Cash flows from operating activities	-73,782,306	11,243,734
	Additions of intangible assets	-852,033	-561,214
	Additions of property, plant and equipment	-5,180,924	-4,778,618
	Disposals of property, plant and equipment	0	1,324,698
	Purchase of financial assets	-112,976	0
	Sale of financial assets	0	111,500
	Cash flows to investing activities	-6,145,933	-3,903,634
	Repayments/proceeds, overdraft facilities	4,799,968	-11,238,541
	Proceeds of debt, finance leases	3,215,736	3,729,786
	Proceeds of debt, group enterprises	127,034,722	0
	Repayments, long-term liabilities	-20,000,000	0
	Repayments, debt to banks	-33,411,234	-4,500,000
	Repayments, finance leases	-1,943,224	-2,765,307
	Cash flows from financing activities	79,695,968	-14,774,062
	Net cash flow	-232,271	-7,433,962
	Cash and cash equivalents at 1 May	1,579,080	9,013,042
24	Cash and cash equivalents at 31 December	1,346,809	1,579,080

Consolidated financial statements and parent company financial statements 1 May - 31 December

Notes to the financial statements

1 Accounting policies

The annual report of Swire Energy Services Holding A/S for 2021 has been prepared in accordance with the provisions in the Danish Financial Statements Act applying to large reporting class C entities.

The accounting policies used in the preparation of the financial statements are consistent with those of last year.

Reporting currency

The financial statements are presented in Danish kroner (DKK).

Consolidated financial statements

Control

The consolidated financial statements comprise the Parent Company and subsidiaries controlled by the Parent Company.

Control means a parent company's power to direct a subsidiary's financial and operating policy decisions. Besides the above power, the parent company should also be able to yield a return from its investment.

In assessing if the parent company controls an entity, de facto control is taken into consideration as well.

The existence of potential voting rights which may currently be exercised or converted into additional voting rights is considered when assessing if an entity can become empowered to direct another entity's financial and operating decisions.

The consolidated financial statements are prepared as a consolidation of the parent company's and the individual subsidiaries' financial statements, which are prepared according to the group's accounting policies. On consolidation, intra-group income and expenses, shareholdings, intra-group balances and dividends, and realised and unrealised gains on intra-group transactions are eliminated. Unrealised gains on transactions with associates are eliminated in proportion to the group's interest in the entity. Unrealised losses are eliminated in the same way as unrealised gains if they do not reflect impairment.

In the consolidated financial statements, the accounting items of subsidiaries are recognised in full. Non-controlling interests' share of the profit/loss for the year and of the equity of subsidiaries which are not wholly-owned are included in the group's profit/loss and equity, respectively, but are disclosed separately.

Acquisitions and disposals of non-controlling interests which are still controlled are recognised directly in equity as a transaction between shareholders.

Investments in associates and joint ventures are recognised in the consolidated financial statements using the equity method.

The group's activities in joint operations are recognised on a line-by-line basis.

Foreign currency translation

On initial recognition, transactions denominated in foreign currencies are translated at the exchange rate at the transaction date. Foreign exchange differences arising between the exchange rates at the transaction date and the date of payment are recognised in the income statement as financial income or financial expenses.

Receivables and payables and other monetary items denominated in foreign currencies are translated at the exchange rate at the balance sheet date. The difference between the exchange rates at the balance sheet date and the date at which the receivable or payable arose or was recognised in the most recent financial statements is recognised in the income statement as financial income or financial expenses.

Consolidated financial statements and parent company financial statements 1 May - 31 December

Notes to the financial statements

1 Accounting policies (continued)

Foreign group entities

Foreign subsidiaries and associates are considered separate entities. Items in such entities' income statements are translated at an average exchange rate for the month, and balance sheet items are translated at closing rates. Foreign exchange differences arising on translation of the opening equity of foreign subsidiaries to closing rates and on translation of the income statements from average exchange rates to closing rates are taken directly to equity.

Derivative financial instruments

On initial recognition, derivative financial instruments are recognised at cost in the balance sheet and are subsequently measured at fair value. Positive and negative fair values of derivative financial instruments are presented as separate items in the balance sheet.

Fair value adjustments of derivative financial instruments designated and qualifying as hedging of future assets or liabilities are recognised as separate items in the balance sheet and in the hedging reserve under equity. If the forecast transaction results in the recognition of assets or liabilities, amounts previously recognised in equity are transferred to the cost of the asset or liability, respectively. If the forecast transaction results in income or expenses, amounts previously recognised in equity are transferred to the income statement in the period in which the hedged item affects the income statement.

Public grants

Public grants to cover expenses are recognised in the income statement when it is deemed likely that all grant criteria have been met. Grants which must be repaid under certain circumstances are recognised only where they are not expected to be repaid.

Income statement

Revenue

Income from the sale of goods for resale and finished goods is recognised in revenue when the most significant rewards and risks have been transferred to the buyer and provided the income can be measured reliably and payment is expected to be received. The date of the transfer of the most significant rewards and risks is based on standardised terms of delivery based on Incoterms® 2020.

Income from the rendering of services is recognised as revenue as the services are rendered. Accordingly, revenue corresponds to the market value of the services rendered during the year (percentage-of-completion method).

Income from work in progress is recognised as revenue by reference to the stage of completion. Accordingly, revenue corresponds to the market value of the work in progress performed during the year (percentage-of-completion method). This method is used where the total income and expenses and the degree of completion of the contract can be measured reliably.

Where income from work in progress cannot be estimated reliably, contract revenue corresponding to the expenses incurred is recognised only in so far as it is probable that such expenses will be recoverable from the counterparty.

Revenue is measured at the fair value of the agreed consideration excluding VAT and taxes charged on behalf of third parties. All discounts and rebates granted are recognised in revenue.

Other operating income and operating expenses

Other operating income and operating expenses comprise items of a secondary nature relative to the Company's core activities, including gains or losses on the sale of fixed assets.

Consolidated financial statements and parent company financial statements 1 May - 31 December

Notes to the financial statements

1 Accounting policies (continued)

Cost of sales

Cost of sales includes the cost of goods used in generating the year's revenue.

Other external expenses

Other external expenses include the year's expenses relating to the Company's core activities, including expenses relating to distribution, sale, advertising, administration, premises, bad debts, payments under operating leases, etc.

Staff costs

Staff costs include wages and salaries, including compensated absence and pension to the Company's employees, as well as other social security contributions, etc. The item is net of refunds from public authorities.

Amortisation/depreciation and impairment

The item comprises amortisation/depreciation and impairment of intangible assets and property, plant and equipment.

The basis of amortisation/depreciation, which is calculated as cost less any residual value, is amortised/depreciated on a straight line basis over the expected useful life. The expected useful lives of the assets are as follows:

Acquired intangible assets	3 years
Group goodwill	20 years
Fixtures and fittings, other plant and equipment	3-5 years
Leasehold improvements	5-8 years

Depreciation is based on the residual value of the asset and is reduced by impairment losses, if any. The depreciation period and the residual value are determined at the acquisition date and are reassessed annually. Where the residual value exceeds the carrying amount of the asset, no further depreciation charges are recognised.

In the case of changes in the depreciation period or the residual value, the effect on the depreciation charges is recognised prospectively as a change in accounting estimates.

Profit/loss from investments in subsidiaries

A proportionate share of the underlying entities' profit/loss after tax is recognised in the income statement according to the equity method. Shares of profit/loss after tax in subsidiaries are presented as separate line items in the income statement. Full elimination of intra-group gains/losses is made for equity investments in subsidiaries.

Consolidated financial statements and parent company financial statements 1 May - 31 December

Notes to the financial statements

1 Accounting policies (continued)

Financial income and expenses

Financial income and expenses are recognised in the income statements at the amounts that concern the financial year. Net financials include interest income and expenses as well as allowances and surcharges under the advance-payment-of-tax scheme, etc.

Tax

The parent company is covered by the Danish rules on mandatory joint taxation of the Group's Danish subsidiaries. Subsidiaries are included in the joint taxation arrangement from the date at which they are included in the consolidated financial statements and up to the date when they are no longer consolidated.

The parent company acts as management company for the joint taxation arrangement and consequently settles all corporate income tax payments with the tax authorities.

On payment of joint taxation contributions, the Danish corporate income tax charge is allocated between the jointly taxed entities in proportion to their taxable income. Entities with tax losses receive joint taxation contributions from entities that have been able to use the tax losses to reduce their own taxable income.

Tax for the year, which comprises the current income tax charge, joint taxation contributions and deferred tax adjustments, including adjustments arising from changes in tax rates, is recognised in the income statement as regards the portion that relates to the profit/loss for the year and directly in equity as regards the portion that relates to entries directly in equity.

Balance sheet

Intangible assets

Goodwill is amortised over the expected economic life of the asset, measured by reference to Management's experience in the individual business segments. Goodwill is amortised on a straight-line basis over the amortisation period. The amortisation period is based on the type of business, earnings and market position of the business, the stability of the industry, and dependency on key staff.

Development costs comprise expenses, salaries and amortisation directly or indirectly attributable to development activities.

Development projects that are clearly defined and identifiable, where the technical feasibility, sufficient resources and a potential future market or development opportunities are identifiable and where the Company intends to produce, market or use the project, are recognised as intangible assets provided that the cost can be measured reliably and that there is sufficient assurance that future earnings can cover production costs, selling costs and administrative expenses and development costs. Other development costs are recognised in the income statement as incurred.

Development costs that are recognised in the balance sheet are measured at cost less accumulated amortisation and impairment losses.

On completion of a development project, development costs are amortised on a straight-line basis over the estimated useful life.

Consolidated financial statements and parent company financial statements 1 May - 31 December

Notes to the financial statements

1 Accounting policies (continued)

Property, plant and equipment

Items of property, plant and equipment are measured at cost less accumulated depreciation and impairment losses. Cost includes the acquisition price and costs directly related to the acquisition until the time at which the asset is ready for use.

Gains or losses are calculated as the difference between the selling price less selling costs and the carrying amount at the date of disposal. Gains and losses from the disposal of property, plant and equipment are recognised in the income statement as other operating income or other operating expenses.

Leases

On initial recognition, leases for assets that transfer substantially all the risks and rewards incident to the ownership to the Company (finance leases) are measured in the balance sheet at the lower of fair value and the present value of the future lease payments. In calculating the net present value, the interest rate implicit in the lease or the incremental borrowing rate is used as the discount factor. Assets held under finance leases are subsequently accounted for in the same way as the Company's other assets.

The capitalised residual lease liability is recognised in the balance sheet as a liability, and the interest element of the lease payment is recognised in the income statement over the term of the lease.

Leases that do not transfer substantially all the risks and rewards incident to the ownership to the Company are classified as operating leases. Payments relating to operating leases and any other rent agreements are recognised in the income statement over the term of the lease. The Company's aggregate liabilities relating to operating leases and other rent agreements are disclosed under "Contingent liabilities".

Investments

Other fixed asset investments consist of deposits.

Investments in subsidiaries

Equity investments in subsidiaries are measured according to the equity method. Equity investments in joint ventures are also measured according to the equity method in the consolidated financial statements.

On initial recognition, equity investments in subsidiaries are measured at cost, i.e. plus transaction costs. The cost is allocated in accordance with the acquisition method; see the accounting policies regarding business combinations.

The cost is adjusted by shares of profit/loss after tax calculated in accordance with the Group's accounting policies less or plus unrealised intra-group gains/losses.

Identified increases in value and goodwill, if any, compared to the underlying entity's net asset value are amortised in accordance with the accounting policies for the assets and liabilities to which they can be attributed. Negative goodwill is recognised in the income statement.

Dividend received is deduced from the carrying amount.

Impairment of fixed assets

The carrying amount of intangible assets, property, plant and equipment and investments in subsidiaries is assessed for impairment on an annual basis.

Impairment tests are conducted on assets or groups of assets when there is evidence of impairment. The carrying amount of impaired assets is reduced to the higher of the net selling price and the value in use (recoverable amount).

Consolidated financial statements and parent company financial statements 1 May - 31 December

Notes to the financial statements

1 Accounting policies (continued)

The recoverable amount is the higher of the net selling price of an asset and its value in use. The value in use is calculated as the present value of the expected net cash flows from the use of the asset or the group of assets and the expected net cash flows from the disposal of the asset or the group of assets after the end of the useful life.

Previously recognised impairment losses are reversed when the reason for recognition no longer exists. Impairment losses on goodwill are not reversed.

Inventories

Inventories are measured at cost in accordance with the FIFO method. Where the net realisable value is lower than cost, inventories are written down to this lower value. The net realisable value of inventories is calculated as the sales amount less costs of completion and expenses required to effect the sale and is determined taking into account marketability, obsolescence and development in the expected selling price.

Goods for resale are measured at cost, which comprises the cost of acquisition plus delivery costs as well as other expenses directly attributable to the acquisition.

Receivables

Receivables are measured at amortised cost.

An impairment loss is recognised if there is objective evidence that a receivable or a group of receivables is impaired. If there is objective evidence that an individual receivable has been impaired, an impairment loss is recognised on an individual basis.

Work in progress

Work in progress is measured at the market value of the work performed less progress billings. The market value is calculated based on the stage of completion at the balance sheet date and the total expected income from the relevant contract. The stage of completion is calculated based on the expenses incurred relative to the expected total expenses relating to the relevant contract.

Where the outcome of contract work in progress cannot be estimated reliably, the market value is measured at the expenses incurred in so far as they are expected to be paid by the purchaser.

Where the total expenses relating to the work in progress are expected to exceed the total market value, the expected loss is recognised as a loss-making agreement under "Provisions" and is expensed in the income statement.

The value of work in progress less progress billings is classified as assets when the selling price exceeds progress billings and as liabilities when progress billings exceed the market value.

Prepayments

Prepayments recognised under "Assets" comprise prepaid expenses regarding subsequent financial reporting years.

Consolidated financial statements and parent company financial statements 1 May - 31 December

Notes to the financial statements

1 Accounting policies (continued)

Cash

Cash comprise cash and short term securities which are readily convertible into cash and subject only to minor risks of changes in value.

Equity

Treasury shares

Purchases and sales of treasury shares are taken directly to equity under "Retained earnings".

Translation reserve

The translation reserve comprises the share of foreign exchange differences arising on translation of financial statements of entities that have a functional currency other than DKK, foreign exchange adjustments of assets and liabilities considered part of the Company's net investments in such entities and foreign exchange adjustments regarding hedging transactions that hedge the Company's net investments in such entities. The reserve is dissolved on the sale of foreign entities or if the conditions for effective hedging no longer exist. When equity investments in subsidiaries and associates in the parent company financial statements are subject to the limitation requirement in the net revaluation reserve according to the equity method, foreign exchange adjustments will be included in this equity reserve instead.

Proposed dividends

Dividend proposed for the year is recognised as a liability once adopted at the annual general meeting (declaration date). Dividends expected to be distributed for the financial year are presented as a separate item under "Equity".

Income taxes

Current tax payables and receivables are recognised in the balance sheet as the estimated income tax charge for the year, adjusted for prior-year taxes and tax paid on account.

Deferred tax is measured according to the liability method on all temporary differences between the carrying amount and the tax base of assets and liabilities. However, deferred tax is not recognised on temporary differences relating to goodwill which is not deductible for tax purposes and on office premises and other items where temporary differences, apart from business combinations, arise at the date of acquisition without affecting either profit/loss for the year or taxable income. Where alternative tax rules can be applied to determine the tax base, deferred tax is measured based on Management's intended use of the asset or settlement of the liability, respectively.

Deferred tax is measured according to the tax rules and at the tax rates applicable at the balance sheet date when the deferred tax is expected to crystallise as current tax. Deferred tax assets are recognised at the expected value of their utilisation; either as a set-off against tax on future income or as a set-off against deferred tax liabilities in the same legal tax entity. Changes in deferred tax due to changes in the tax rate are recognised in the income statement.

As management company for all the entities in the joint taxation arrangement, the parent company is liable for payment of the subsidiaries' income taxes vis à vis the tax authorities as the subsidiaries pay their joint taxation contributions. Joint taxation contributions payable or receivable are recognised in the balance sheet as income tax receivables or payables.

Consolidated financial statements and parent company financial statements 1 May - 31 December

Notes to the financial statements

1 Accounting policies (continued)

Liabilities

Financial liabilities are recognised at the date of borrowing at the net proceeds received less transaction costs paid. On subsequent recognition, financial liabilities are measured at amortised cost, corresponding to the capitalised value, using the effective interest rate. Accordingly, the difference between the proceeds and the nominal value is recognised in the income statement over the term of the loan. Financial liabilities also include the capitalised residual lease liability in respect of finance leases.

Other liabilities are measured at net realisable value.

Lease liabilities

Lease liabilities are measured at the net present value of the remaining lease payments including any guaranteed residual value based on the interest rate implicit in the lease.

Subordinate loan capital

Liabilities where the creditors have stated they are willing to subordinate their claim to rank after all the entity's other creditors are presented as subordinate loan capital. Subordinate loan capital is recognised using the same method as applies to liabilities.

Cash flow statement

The cash flow statement shows the Company's net cash flows broken down according to operating, investing and financing activities, the year's changes in cash and cash equivalents as well as the cash and cash equivalents at the beginning and the end of the year.

Cash flows from operating activities are calculated as the profit/loss for the year adjusted for non cash operating items, changes in working capital and paid corporate income tax.

Cash flows from investing activities comprise payments in connection with acquisitions and disposals of entities and activities and of intangible assets, property, plant and equipment and investments.

Cash flows from financing activities comprise changes in the size or composition of the Company's share capital and related expenses as well as raising of loans, repayment of interest bearing debt and payment of dividends to shareholders.

Cash and cash equivalents comprise cash, short term bank loans and short term securities which are readily convertible into cash and which are subject only to insignificant risks of changes in value.

Segment information

The allocation of revenue to activities and geographical markets is disclosed where these activities and markets differ significantly in the organisation of sales of goods and services.

Consolidated financial statements and parent company financial statements 1 May - 31 December

Notes to the financial statements

2 Special items

Group

Special items comprise significant income and expenses of a special nature relative to the company's revenue-generating operating activities.

	Group		Parent company	
	2021 8 months	2020/21 12 months	2021 8 months	2020/21 12 months
DKK				
Income				
Compensation for fixed costs	0	1,825,444	0	0
	0	1,825,444	0	0
Expenses				
Impairment of goodwill	0	18,869,891	0	0
	0	18,869,891	0	0
Special items are recognised in the below items of the financial statements				
Other operating income	0	1,825,444	0	0
Amortisation/depreciation and impairment of intangible assets and property, plant and equipment	0	18,869,891	0	0
Net profit on special items	0	20,695,335	0	0

Group

During 2020/21, the Group has received compensation for fixed costs of total DKK 1,825 thousand. The amount relates to compensation from the Danish state to cover the Group's fixed costs in the period when Denmark was shut down as a result of COVID-19. For the fixed costs, where compensation has been received, in the corresponding period there have been costs for the Group for total DKK 8,396 thousand.

Consolidated financial statements and parent company financial statements 1 May - 31 December
Notes to the financial statements

	Group		Parent company	
	2021 8 months	2020/21 12 months	2021 8 months	2020/21 12 months
DKK				
3 Segment information				
Breakdown of revenue by business segment:				
Construction- and high-voltage work	88,289,121	115,798,331	0	0
Manpower and other leases for the wind industry	102,756,426	137,085,281	0	0
Manpower and other leases for the oil and gas industry	32,874,048	46,077,687	0	0
	<u>223,919,595</u>	<u>298,961,299</u>	<u>0</u>	<u>0</u>
Breakdown of revenue by geographical segment:				
Revenue, Scandinavia	112,028,174	162,217,351	0	0
Revenue, Europe	101,408,565	130,161,963	0	0
Revenue, Far East	10,482,856	6,581,985	0	0
	<u>223,919,595</u>	<u>298,961,299</u>	<u>0</u>	<u>0</u>
4 Staff costs				
Wages/salaries	154,606,288	195,387,268	0	0
Pensions	10,762,999	17,271,612	0	0
Other social security costs	3,029,035	2,646,448	0	0
Other staff costs	13,831,286	8,670,763	0	0
Staff costs transferred to non-current assets	-3,100,000	0	0	0
	<u>179,129,608</u>	<u>223,976,091</u>	<u>0</u>	<u>0</u>
	Group		Parent company	
	2021	2020/21	2021	2020/21
Average number of full-time employees	<u>241</u>	<u>268</u>	<u>0</u>	<u>0</u>

Group

By reference to section 98b(3), (ii), of the Danish Financial Statements Act, remuneration to group management is not disclosed.

Parent company

The Parent Company has no employees.

Consolidated financial statements and parent company financial statements 1 May - 31 December

Notes to the financial statements

	Group		Parent company	
	2021 8 months	2020/21 12 months	2021 8 months	2020/21 12 months
DKK				
5 Financial income				
Other financial income	1,272	2,011,878	10,698	0
	<u>1,272</u>	<u>2,011,878</u>	<u>10,698</u>	<u>0</u>
6 Financial expenses				
Interest expenses, group entities	0	0	0	6,646,795
Other financial expenses	14,430,565	10,537,426	10,680,850	663,986
	<u>14,430,565</u>	<u>10,537,426</u>	<u>10,680,850</u>	<u>7,310,781</u>
7 Tax for the year				
Estimated tax charge for the year	577,882	211,635	0	0
Deferred tax adjustments in the year	8,849,800	-2,100,500	6,401,600	-1,614,500
Tax adjustments, prior years	105,165	0	0	0
	<u>9,532,847</u>	<u>-1,888,865</u>	<u>6,401,600</u>	<u>-1,614,500</u>
8 Intangible assets				
		Group		
		Acquired intangible assets	Group goodwill	Total
DKK				
Cost at 1 May 2021		5,633,149	260,992,171	266,625,320
Additions		852,033	0	852,033
Disposals on sale of other enterprise		0	-750,271	-750,271
Cost at 31 December 2021		<u>6,485,182</u>	<u>260,241,900</u>	<u>266,727,082</u>
Impairment losses and amortisation at 1 May 2021		3,302,521	154,459,554	157,762,075
Amortisation for the year		1,421,254	5,537,864	6,959,118
Impairment losses and amortisation at 31 December 2021		<u>4,723,775</u>	<u>159,997,418</u>	<u>164,721,193</u>
Carrying amount at 31 December 2021		<u>1,761,407</u>	<u>100,244,482</u>	<u>102,005,889</u>

Consolidated financial statements and parent company financial statements 1 May - 31 December

Notes to the financial statements

9 Property, plant and equipment

	Group		
	Fixtures and fittings, other plant and equipment	Leasehold improvements	Total
DKK			
Cost at 1 May 2021	20,048,433	2,288,002	22,336,435
Foreign exchange adjustments	7,844	0	7,844
Additions	5,180,923	0	5,180,923
Disposals on demerger and sale of other enterprise	-3,769,384	-1,637,168	-5,406,552
Disposals	-1,481,917	0	-1,481,917
Cost at 31 December 2021	19,985,899	650,834	20,636,733
Impairment losses and depreciation at 1 May 2021	12,340,191	2,002,809	14,343,000
Foreign exchange adjustments	6,827	0	6,827
Depreciation	1,964,799	46,097	2,010,896
Depreciation and impairment of disposals	-958,614	0	-958,614
Reversal of accumulated depreciation and impairment of assets disposed	-3,765,651	-1,637,168	-5,402,819
Impairment losses and depreciation at 31 December 2021	9,587,552	411,738	9,999,290
Carrying amount at 31 December 2021	10,398,347	239,096	10,637,443
Property, plant and equipment include finance leases with a carrying amount totalling	8,091,809	0	8,091,809

10 Investments

	Group
	Deposits
DKK	
Cost at 1 May 2021	512,397
Additions	112,976
Cost at 31 December 2021	625,373
Value adjustments at 1 May 2021	0
Value adjustments at 31 December 2021	0
Carrying amount at 31 December 2021	625,373

Consolidated financial statements and parent company financial statements 1 May - 31 December

Notes to the financial statements

10 Investments (continued)

	<u>Parent company</u>
	<u>Investments in group enterprises</u>
DKK	
Cost at 1 May 2021	300,765,058
Cost at 31 December 2021	300,765,058
Value adjustments at 1 May 2021	-214,319,616
Foreign exchange adjustments	46,595
Profit/loss for the year	-26,649,771
Value adjustments at 31 December 2021	-240,922,792
Carrying amount at 31 December 2021	<u>59,842,266</u>

Parent company

<u>Name</u>	<u>Legal form</u>	<u>Domicile</u>	<u>Interest</u>
Subsidiaries			
Swire Energy Services A/S	Private limited company	Aarhus	100.00%
- Swire Energy Services Wind Ltd.*	Limited liability company	England	100.00%
- Swire Energy Services GmbH*	Limited liability company	Germany	100.00%
- Swire Energy Services Sp Z.o.o.*	Limited liability company	Poland	100.00%
- Swire EnergyServices B.V.*	Limited liability company	The Netherlands	100.00%

*Subsidiaries of Swire Energy Services A/S

	<u>Group</u>		<u>Parent company</u>	
DKK	<u>2021</u>	<u>2020/21</u>	<u>2021</u>	<u>2020/21</u>
11 Work in progress				
Selling price of work performed	21,378,000	70,057,132	0	0
Progress billings	-13,255,000	-60,371,000	0	0
	<u>8,123,000</u>	<u>9,686,132</u>	<u>0</u>	<u>0</u>
recognised as follows:				
Work in progress (assets)	9,611,000	13,299,132	0	0
Work in progress (liabilities)	-1,488,000	-3,613,000	0	0
	<u>8,123,000</u>	<u>9,686,132</u>	<u>0</u>	<u>0</u>

Consolidated financial statements and parent company financial statements 1 May - 31 December

Notes to the financial statements

12 Prepayments

Group

Prepayments include accrual of expenses relating to subsequent financial years, including rent, insurance premiums and subscriptions.

DKK	Parent company	
	2021	2020/21
13 Share capital		
Analysis of the share capital:		
5,281,834 A shares of DKK 1.00 nominal value each	5,281,834	2,624,999
0 B shares of DKK 1.00 nominal value each	0	1,233,334
0 C shares of DKK 1.00 nominal value each	0	1,441,666
	5,281,834	5,299,999

Analysis of changes in the share capital over the past 5 years:

DKK	2021	2020/21	2019	2018	2017
Opening balance	5,299,999	4,231,666	4,231,666	4,231,666	4,231,666
Capital increase	0	1,068,333	0	0	0
Capital reduction	-18,165	0	0	0	0
	5,281,834	5,299,999	4,231,666	4,231,666	4,231,666

14 Treasury shares

Parent company

	Number	Nominal value	Share of capital
		DKK	
Balance at 1 May 2021	9,832	9,832	0.23%
Capital reduction	-9,832	-9,832	-0.23%
Balance at 31 December 2021	0	0	0.00%

	Number	Nominal value	Share of capital
		DKK	
Balance at 1 May 2021	8,333	8,333	0.20%
Capital reduction	-8,333	-8,333	-0.20%
Balance at 31 December 2021	0	0	0.00%

Treasury shares are acquired, among others, to be used in the incentive scheme for members of the Executive Board and other executive officers.

Consolidated financial statements and parent company financial statements 1 May - 31 December

Notes to the financial statements

DKK	Group		Parent company	
	2021	2020/21	2021	2020/21
15 Deferred tax				
Deferred tax at 1 May	-10,094,800	-7,849,800	-6,401,600	-4,787,100
Deferred tax adjustment in the year, income statement	8,849,800	-2,100,500	6,401,600	-1,614,500
Tax adjustments, prior years, income statement	0	-144,500	0	0
Deferred tax adjustment in the year, due to demerger	1,245,000	0	0	0
Deferred tax at 31 December	0	-10,094,800	0	-6,401,600
Deferred tax relates to:				
Intangible assets	0	512,600	0	0
Property, plant and equipment	0	924,700	0	0
Liabilities	0	-1,478,000	0	0
Tax loss	0	-10,313,300	0	-6,401,600
Other taxable temporary differences	0	259,200	0	0
	0	-10,094,800	0	-6,401,600

Group

Besides the tax loss recognised in the statement of deferred tax, the group has additional tax loss carry-forwards at a carrying amount of DKK 71,386 thousand. As it is uncertain if these tax losses can be utilised within a foreseeable future, their carrying amount has not been recognised in the financial statements.

16 Non-current liabilities other than provisions

DKK	Group			
	Total debt at 31/12 2021	Repayment, next year	Long-term portion	Outstanding debt after 5 years
Lease liabilities	7,990,919	5,251,919	2,739,000	0
Other payables	16,948,172	0	16,948,172	10,348,364
	24,939,091	5,251,919	19,687,172	10,348,364

Consolidated financial statements and parent company financial statements 1 May - 31 December

Notes to the financial statements

17 Contractual obligations and contingencies, etc.

Other financial obligations

Other rent and lease liabilities:

	Group		Parent company	
	2021	2020/21	2021	2020/21
DKK				
Rent and lease liabilities	1,862,000	2,115,000	0	0

Group

Rent and lease liabilities include a rent obligation totalling DKK 936 thousand in interminable rent agreements with remaining contract terms of 0-2 years. Furthermore, the Company has liabilities under operating leases for cars and IT equipment, totalling DKK 926 thousand, with remaining contract terms of 4 years.

Parent company

As management company, the Company is jointly taxed with other Danish group entities. The Company is jointly and severally liable with other jointly taxed group entities for payment of income taxes and withholding taxes in the group of jointly taxed entities.

Guarantee commitments consist of an enforceable guarantee provided in respect of all outstanding bank commitments in:

- Swire Energy Services A/S

18 Collateral

Group

As security for the Group's debt to banks, the Group has provided security or other collateral in its assets for a total amount of DKK 26,500 thousand. The total carrying amount of these assets is DKK 156,438 thousand. The security/collateral and the carrying amount have been allocated to financial statement items as follows:

A company charge of DKK 26,500 thousand on the Company's assets at a carrying amount of DKK 156,438 thousand at 31 December 2021 has been provided as security for debt to banks, totalling DKK 10,894 thousand.

The Group's bank has provided work guarantees to third parties for a total of DKK 6,480 thousand.

Parent company

Shares in subsidiary at a carrying amount of DKK 59,842 thousand at 31 December 2021 have been provided as security for debt to banks, totalling DKK 10,897 thousand.

Consolidated financial statements and parent company financial statements 1 May - 31 December

Notes to the financial statements

19 Related parties

Group

Swire Energy Services Holding A/S' related parties comprise the following:

Parties exercising control

Related party	Domicile	Basis for control
Swire Energy Services (Holdings) Limited	London, United Kingdom	Participating interest

Related party transactions

The Company solely discloses related party transactions that have not been carried out on an arm's length basis, see section 98c(7) of the Danish Financial Statements Act.

All transactions have been carried out on an arm's length basis.

Parent company

Parties exercising control

Related party	Domicile	Basis for control
Swire Energy Services (Holdings) Limited	London, United Kingdom	Participating interest

Significant influence

Related party	Domicile	Basis for significant influence
Swire Energy Services (Holdings) Limited	London, United Kingdom	Participating interest

Transactions with related parties

The Company solely discloses related party transactions that have not been carried out on an arm's length basis, see section 98c(7) of the Danish Financial Statements Act.

All transactions have been carried out on an arm's length basis.

	Group		Parent company	
	2021 8 months	2020/21 12 months	2021 8 months	2020/21 12 months
DKK				
20 Fee to the auditors appointed by the Company in general meeting				
Total fees to EY	350,250	557,053	108,750	13,875
Statutory audit	153,000	191,950	8,000	7,625
Assurance engagements	15,000	55,000	0	0
Tax assistance	108,250	233,503	97,250	2,500
Other assistance	74,000	76,600	3,500	3,750
	350,250	557,053	108,750	13,875

Consolidated financial statements and parent company financial statements 1 May - 31 December

Notes to the financial statements

		Parent company	
DKK		2021 8 months	2020/21 12 months
21 Appropriation of profit/loss			
Recommended appropriation of profit/loss			
Retained earnings/accumulated loss		-46,931,423	-36,136,180
		<u>-46,931,423</u>	<u>-36,136,180</u>
		Group	
DKK		2021 8 months	2020/21 12 months
22 Adjustments			
Amortisation/depreciation and impairment losses		8,970,015	33,567,900
Gain/loss on the sale of non-current assets		523,225	223,560
Financial income		-1,272	-11,519
Financial expenses		14,430,565	10,531,079
Tax for the year		683,047	211,635
Deferred tax		8,849,800	-2,100,500
Other adjustments		45,578	-18,831
		<u>33,500,958</u>	<u>42,403,324</u>
23 Changes in working capital			
Change in inventories		-1,800,831	-480,337
Change in receivables		-19,353,999	-11,913,864
Change in trade and other payables		-24,767,718	28,180,889
		<u>-45,922,548</u>	<u>15,786,688</u>
24 Cash and cash equivalents at year-end			
Cash according to the balance sheet		1,346,809	1,579,080
		<u>1,346,809</u>	<u>1,579,080</u>

PENNEO

The signatures in this document are legally binding. The document is signed using Penneo™ secure digital signature. The identity of the signers has been recorded, and are listed below.

"By my signature I confirm all dates and content in this document."

Sabine Weth

Executive Board

On behalf of: Swire Energy Services Holding A/S

Serial number: 9578-5999-4-4649421

IP: 85.115.xxx.xxx

2022-06-30 10:42:51 UTC



Sabine Gabriele Weth

Board of Directors

On behalf of: Swire Energy Services Holding A/S

Serial number: sabine.weth@swirees.com

IP: 85.115.xxx.xxx

2022-06-30 10:43:35 UTC

Martin Humphrey Shaw

Chair of the meeting

On behalf of: Swire Energy Services Holding A/S

Serial number: martin.shaw@swirees.com

IP: 85.115.xxx.xxx

2022-06-30 10:44:02 UTC

Martin Humphrey Shaw

Board of Directors

On behalf of: Swire Energy Services Holding A/S

Serial number: martin.shaw@swirees.com

IP: 85.115.xxx.xxx

2022-06-30 10:44:02 UTC

Manfred Vonlanthen

Chair

On behalf of: Swire Energy Services Holding A/S

Serial number: 9578-5993-4-3388444

IP: 89.150.xxx.xxx

2022-06-30 11:35:06 UTC



Tom Barreth Lassen

State Authorised Public Accountant

On behalf of: EY Godkendt Revisionspartnerselskab

Serial number: CVR:30700228-RID:1277382224436

IP: 145.62.xxx.xxx

2022-06-30 11:54:36 UTC



Penneo document key: IK3F2-DCGBQ-UTVB0-BE3J6-ELZQ0-AB1TP

This document is digitally signed using Penneo.com. The digital signature data within the document is secured and validated by the computed hash value of the original document. The document is locked and timestamped with a certificate from a trusted third party. All cryptographic evidence is embedded within this PDF, for future validation if necessary.

How to verify the originality of this document

This document is protected by an Adobe CDS certificate. When you open the

document in Adobe Reader, you should see, that the document is certified by **Penneo e-signature service** <penneo@penneo.com>. This guarantees that the contents of the document have not been changed.

You can verify the cryptographic evidence within this document using the Penneo validator, which can be found at <https://penneo.com/validate>