

The annual report has been presented
and approved at the annual general
meeting of the company
on 19.06.2024

(chairman) John Tyrrestrup

Niki Invest ApS

CVR-nr. 25 23 79 94

Kvæsthusgade 1
1251 København K
Denmark

Consolidated Financial statements 2023

Table of contents

	Page
Management's review	
Company information	2
Financial highlights	3
Management's review	4
Statement by Management and independent auditor's report	
Statement by the Management on the annual report	8
Independent auditor's report.	8
Financial statements for 1 January - 31 December 2023	
Income statement	11
Statement of financial position.	12
Equity statement	14
Cash flow statement	15
Notes	16

Company information

The company

Niki Invest ApS
Kvæsthusgade 1
1251 København K
Denmark

CVR-no.: 25 23 79 94
Established: 1 March 2000
Registered office: Copenhagen
Financial year: 1 January - 31 December

Executive Board

Ditlev Wedell-Wedellsborg

Auditor

PricewaterhouseCoopers
Statsautoriseret Revisionspartnerselskab
Strandvejen 44
2900 Hellerup
Denmark

Financial highlights for the group

	2023	2022	2021	2020	2019
	(mio.kr.)	(mio.kr.)	(mio.kr.)	(mio.kr.)	(mio.kr.)
Income statement					
Revenue	861.8	462.2	234.2	196.1	625.4
Contribution margin	176.0	144.6	79.8	70.2	142.0
Gross profit	123.4	101.6	47.8	32.4	95.3
EBITDA	32.0	31.0	-0.7	-20.9	17.5
Operating profit (EBIT)	20.3	20.9	-10.7	-32.8	7.8
Financial, netto	9.9	-11.5	23.9	2.9	12.4
Result before tax	30.2	9.5	13.6	-26.3	14.5
Statement of financial position at 31 December					
Total balance	377.8	349.5	306.4	236.0	336.2
Equity	164.7	137.3	129.8	120.5	159.5
Cash flow					
From operating activities	19.7	-8.7	22.3	-15.2	14.6
Investment activity	-12.3	-5.1	-8.3	-11.9	-14.6
Hereof investment in intangible and tangible fixed assets	-17.6	-7.3	-8.1	-6.6	-10.4
Financing activity	5.3	2.2	-0.2	-3.4	-7.5
Employees					
Average number	326	286	209	237	331
Key ratios in % *)					
Contribution margin	20.4	31.3	34.1	35.9	22.7
Gross margin	14.3	22.0	20.4	16.6	15.2
EBITDA-margin	3.7	6.7	-0.3	-10.7	2.8
Operating margin	2.4	4.5	-4.6	-16.7	1.3
Return on assets	6.5	7.4	-4.5	-13.0	2.7
Solidity	40.5	37.7	42.4	51.0	46.1
Return on equity	20.0	7.1	10.5	-21.3	13.0

*) For definitions, see the section on accounting policies.

Management review

Main activities

The company's main activity is investment in affiliates and securities. The Group's activities include, among other things, travel agency activities and equity investments in unlisted companies.

Development in activities and economic conditions

The result for the Group company is a profit of TDKK 26.960 (2022 profit TDKK 8.084).

Total revenue at 862 MDKK were above last year (2022: 462 MDKK) and the result for the whole year came in above expected.

Risk factors

Operational risks

In addition to the ordinary commercial risk in the various markets, the Group has no unusual risks.

Currency risks

The Group's foreign companies are not immediately affected by exchange rate fluctuations, as both income and expenses are settled in local currency. Activities performed by Danish companies are affected by exchange rate changes, as certain services and goods are generated in foreign currency, while costs are charged in Danish kroner.

The Group's share of the profit for the year is affected by changes in exchange rates, as the foreign subsidiaries are converted to Danish kroner.

Statement of corporate social responsibility, cf. section 99 a of the Danish Financial Statements Act *Business Model*

NIKI Invest ApS's primary business is to conduct investment business and related business. NIKI Invest ApS is the parent company of several companies that include travel agency activities and investment in general. No companies in which Niki Invest ApS owns shares are independently covered by the requirements for reporting on corporate social responsibility, including having formulated corporate social responsibility policies.

Risk analysis

NIKI Invest ApS complies with relevant legislation across industries and locations in which the Group's companies operate. Against this background and taking the activities of the Group into consideration, the Group's risk of influencing the environment, climate, social and employee relations, human rights and anti-corruption is considered to be limited.

Environment, climate, social and employee relations and human rights

NIKI Invest ApS has no separate policies regarding the environment and climate impact, social and employee relations and human rights. The Company's affiliates are of a size that is not subject to the same as the Group reporting requirements, so it is not considered necessary to develop formal policies. Furthermore, based on the size and geographical location of affiliated companies, the absence of joint processes is not considered to expose the Group to risks associated with the company's employee relations or human rights violations.

Management review

As the Company operates in locations with regulations to the protection of the environment and climate, the risks are considered to be appropriately mitigated through compliance with regulation. A policy has therefore not been implemented.

Anti-corruption

NIKI Invest ApS is aware that some of the Group's companies are located in areas where there is other risk of corruption and bribery. It is considered that national legislation is sufficient to deal with related risks, and it is therefore not assessed that the Group's possible exposure to corruption and bribery is present to an extent that requires a policy for this.

Data ethics

The Niki Invest Group does not use advanced technologies such as artificial intelligence or machine learning. The company handles general data in the form of customer data and employee data. Data is processed in accordance with the GDPR and privacy and information security policies. With the limited processing of data, it is the company's assessment that there is no need for a policy on data ethics. The company will continuously assess whether a policy is necessary.

Statement of the gender composition of management, cf. section 99 b of the Danish Financial Statements Act

The company is covered by section 139c of the Companies Act. The company's top management level consists of one person, and therefore the company is considered to have an equal gender distribution.

	Top management	Management level 2
Total number	<u>1</u>	<u>0</u>
Underrepresented gender	<u>0</u>	<u>0</u>

Other management teams

During the financial year 2023, the Company has had less than 50 full time employees, it is not covered by the rules on information on underrepresented gender.

Expected development

The western world is still witnessing the aftereffects of covid-19, but the company's travel related activities have witnessed a return to near normal as before corona-19. As world economic outlook feels more uncertain than normal, the result from the company's other activities and in particular securities are uncertain.

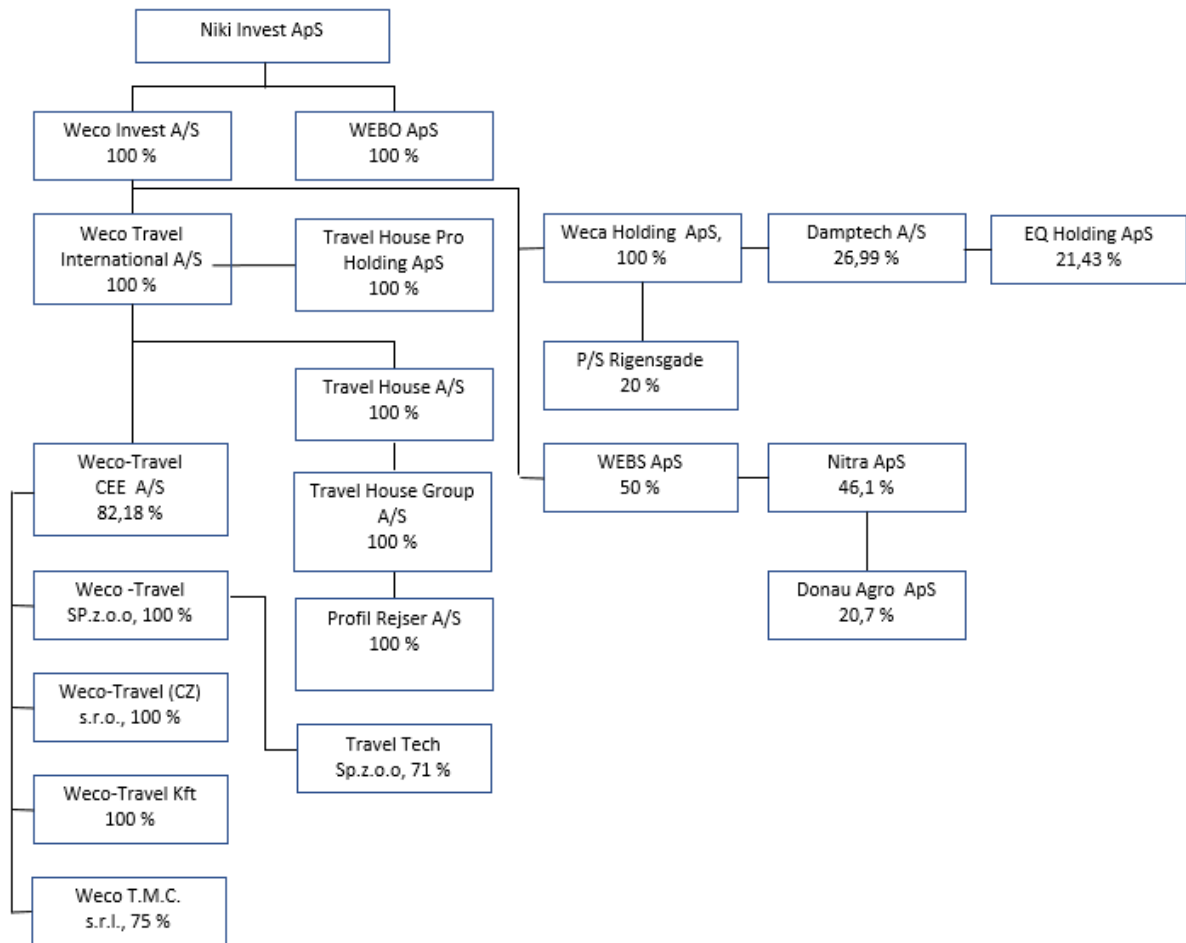
Taken together and without significant change to the general economic outlook, the company expects results in line with last year.

Events after the balance sheet date

No events occurred after the balance sheet date that materially affects the financial position of the group.

Management's review

Group overview



Statement by the Management on the annual report

The Executive Board have today considered and adopted the Annual Report of Niki Invest ApS for the financial year 1 January 2022 - 31 December 2023.

The Annual Report is prepared in accordance with the Danish Financial Statements Act.

In our opinion the Financial Statements and the Consolidated Financial Statements give a true and fair view of the financial position on 31 December 2023 of the Company and the Group and of the results of the Company and Group operations for 2023.

In our opinion, Management's Review includes a true and fair account of the matters addressed in the Review.

We recommend that the Annual Report be adopted at the Annual General Meeting

Copenhagen, on 19.06.2024.

Executive Board

Ditlev Wedell-Wedellsborg

Independent Auditor's Report

To the Shareholders of Niki Invest ApS

Opinion

In our opinion, the Consolidated Financial Statements and the Parent Company Financial Statements give a true and fair view of the financial position of the Group and the Parent Company at 31 December 2023, and of the results of the Group's and the Parent Company's operations as well as the consolidated cash flows for the financial year 1 January - 31 December 2023 in accordance with the Danish Financial Statements Act.

We have audited the Consolidated Financial Statements and the Parent Company Financial Statements of Niki Invest ApS for the financial year 1 January - 31 December 2023, which comprise income statement, balance sheet, statement of changes in equity and notes, including a summary of significant accounting policies, for both the Group and the Parent Company, as well as consolidated statement of cash flows ("financial statements").

Basis for Opinion

We conducted our audit in accordance with International Standards on Auditing (ISAs) and the additional requirements applicable in Denmark. Our responsibilities under those standards and requirements are further described in the Auditor's Responsibilities for the Audit of the Financial Statements section of our report. We are independent of the Group in accordance with the International Ethics Standards Board for Accountants' International Code of Ethics for Professional Accountants (IESBA Code) and the additional ethical requirements applicable in Denmark, and we have fulfilled our other ethical responsibilities in accordance with these requirements and the IESBA Code. We believe that the audit evidence we have obtained is sufficient and appropriate to provide a basis for our opinion.

Statement on Management's Review

Management is responsible for Management's Review.

Our opinion on the financial statements does not cover Management's Review, and we do not express any form of assurance conclusion thereon.

In connection with our audit of the financial statements, our responsibility is to read Management's Review and, in doing so, consider whether Management's Review is materially inconsistent with the financial statements or our knowledge obtained during the audit, or otherwise appears to be materially misstated.

Moreover, it is our responsibility to consider whether Management's Review provides the information required under the Danish Financials Statements Act.

Based on the work we have performed, in our view, Management's Review is in accordance with the Consolidated Financial Statements and the Parent Company Financial Statements and has been prepared in accordance with the requirements of the Danish Financial Statement Act. We did not identify any material misstatement in Management's Review.

Independent Auditor's Report

Management's Responsibilities for the Financial Statements

Management is responsible for the preparation of Consolidated Financial Statements and Parent Company Financial Statements that give a true and fair view in accordance with the Danish Financial Statements Act, and for such internal control as Management determines is necessary to enable the preparation of financial statements that are free from material misstatement, whether due to fraud or error.

In preparing the financial statements, Management is responsible for assessing the Group's and the Parent Company's ability to continue as a going concern, disclosing, as applicable, matters related to going concern and using the going concern basis of accounting in preparing the financial statements unless Management either intends to liquidate the Group or the Parent Company or to cease operations, or has no realistic alternative but to do so.

Auditor's Responsibilities for the Audit of the Financial Statements

Our objectives are to obtain reasonable assurance about whether the financial statements as a whole are free from material misstatement, whether due to fraud or error, and to issue an auditor's report that includes our opinion. Reasonable assurance is a high level of assurance, but is not a guarantee that an audit conducted in accordance with ISAs and the additional requirements applicable in Denmark will always detect a material misstatement when it exists. Misstatements can arise from fraud or error and are considered material if, individually or in the aggregate, they could reasonably be expected to influence the economic decisions of users taken on the basis of these financial statements.

As part of an audit conducted in accordance with ISAs and the additional requirements applicable in Denmark, we exercise professional judgment and maintain professional skepticism throughout the audit. We also:

- Identify and assess the risks of material misstatement of the financial statements, whether due to fraud or error, design and perform audit procedures responsive to those risks, and obtain audit evidence that is sufficient and appropriate to provide a basis for our opinion. The risk of not detecting a material misstatement resulting from fraud is higher than for one resulting from error as fraud may involve collusion, forgery, intentional omissions, misrepresentations, or the override of internal control.
- Obtain an understanding of internal control relevant to the audit in order to design audit procedures that are appropriate in the circumstances, but not for the purpose of expressing an opinion on the effectiveness of the Group's and the Parent Company's internal control.
- Evaluate the appropriateness of accounting policies used and the reasonableness of accounting estimates and related disclosures made by Management.
- Conclude on the appropriateness of Management's use of the going concern basis of accounting in preparing the financial statements and, based on the audit evidence obtained, whether a material uncertainty exists related to events or conditions that may cast significant doubt on the Group's and the Parent Company's ability to continue as a going concern. If we conclude that a material uncertainty exists, we are required to draw attention in our auditor's report to the related disclosures in the financial statements or, if such disclosures are inadequate, to modify our opinion. Our conclu-

Independent Auditor's Report

sions are based on the audit evidence obtained up to the date of our auditor's report. However, future events or conditions may cause the Group and the Parent Company to cease to continue as a going concern.

- Evaluate the overall presentation, structure and contents of the financial statements, including the disclosures, and whether the financial statements represent the underlying transactions and events in a manner that gives a true and fair view.
- Obtain sufficient appropriate audit evidence regarding the financial information of the entities or business activities within the Group to express an opinion on the Consolidated Financial Statements. We are responsible for the direction, supervision and performance of the group audit. We remain solely responsible for our audit opinion.

We communicate with those charged with governance regarding, among other matters, the planned scope and timing of the audit and significant audit findings, including any significant deficiencies in internal control that we identify during our audit.

Hellerup, 19. June 2024

PricewaterhouseCoopers

Statsautoriseret Revisionspartnerselskab

CVR No 33 77 12 31

Nikolaj Erik Johnsen
statsautoriseret revisor
mne35806

Rebin Menmi
Statsautoriseret revisor
mne49873

Income statement

	Note	Group		Parent	
		2023 (DKK '000)	2022 (DKK '000)	2023 (DKK '000)	2022 (DKK '000)
Revenue	1	861,787	462,220	153	176
Other income		38	1,816	-	-
Direct expenses		685,802	319,417	-	-
Other external ex- penses	2	52,639	43,044	565	264
Gross profit		<u>123,384</u>	<u>101,575</u>	<u>-412</u>	<u>-89</u>
Staff costs	3	91,391	70,630	-	-
Depreciation	4/5	11,671	9,982	85	85
Result before financial items		<u>20,322</u>	<u>20,963</u>	<u>-497</u>	<u>-173</u>
Result in group enter- prises		-	-	14,879	11,055
Result associated en- terprises	6	3	1,130	-	-
Financial income	7	12,398	3,205	10,391	2,618
Financial expenses	8	2,545	15,783	1,063	14,721
Result before tax		<u>30,178</u>	<u>9,515</u>	<u>23,709</u>	<u>-1,222</u>
Tax on result for the year	9	3,218	1,431	2,012	-3,089
Result for the year		<u><u>26,960</u></u>	<u><u>8,084</u></u>	<u><u>21,697</u></u>	<u><u>1,867</u></u>
Proposed distribution of result	10				

Statement of financial position at 31 December

	Note	Group		Parent	
		2023	2022	2023	2022
Assets		(DKK '000)	(DKK '000)	(DKK '000)	(DKK '000)
Software		13,840	9,767	-	-
Licenses		562	609	-	-
Goodwill		9,494	10,405	-	-
Intangible fixed assets	4	<u>23,896</u>	<u>20,781</u>	<u>-</u>	<u>-</u>
Furnishing of rented premises		609	625	-	-
Land and Buildings		21,488	16,985	5,249	5,334
Equipment and fixtures and fittings		7,390	8,298	-	-
Tangible fixed assets	5	<u>29,487</u>	<u>25,908</u>	<u>5,249</u>	<u>5,334</u>
Investments in group enterprises	6	-	-	93,499	89,856
Investments in associated enterprises	6	27,503	28,156	-	-
Other investments	6	24,073	20,481	18,501	19,082
Deposits		882	850	-	-
Deferred tax asset	11	10,259	9,201	2,896	3,244
Financial fixed assets		<u>62,717</u>	<u>58,688</u>	<u>114,895</u>	<u>112,182</u>
Total fixed assets		<u>116,100</u>	<u>105,377</u>	<u>120,145</u>	<u>117,516</u>
Receivables from sale and services		85,742	73,148	-	-
Prepaid tax		249	-	-	-
Prepayments		56,655	50,433	-	-
Other receivables		8,508	11,549	4,754	94
Receivables		<u>151,154</u>	<u>135,130</u>	<u>4,754</u>	<u>94</u>
Securities	12	<u>55,353</u>	<u>54,751</u>	<u>55,004</u>	<u>54,439</u>
Cash		<u>55,183</u>	<u>54,192</u>	<u>1,735</u>	<u>2,771</u>
Total current assets		<u>261,690</u>	<u>244,073</u>	<u>61,493</u>	<u>57,303</u>
Total assets		<u><u>377,790</u></u>	<u><u>349,450</u></u>	<u><u>181,637</u></u>	<u><u>174,820</u></u>

Statement of financial position at 31 December

	Note	Group		Parent	
		2023 (DKK '000)	2022 (DKK '000)	2023 (DKK '000)	2022 (DKK '000)
Equity and liabilities					
Share capital		1,501	1,501	1,501	1,501
Net revaluation reserve according to the equity method		-	-	-	-
Retained earnings		151,543	130,083	139,543	130,083
Proposed dividend		-	-	12,000	-
Equity (Parent)		<u>153,044</u>	<u>131,584</u>	<u>153,044</u>	<u>131,584</u>
Minority interests		<u>11,682</u>	<u>5,676</u>	<u>-</u>	<u>-</u>
Total equity		<u>164,726</u>	<u>137,260</u>	<u>153,044</u>	<u>131,584</u>
Deferred tax	13	<u>1,111</u>	<u>1,130</u>	<u>-</u>	<u>-</u>
Mortgage		7,777	7,725	2,846	2,795
Other liabilities		<u>14,928</u>	<u>21,862</u>	<u>-</u>	<u>-</u>
Long-term liabilities	14	<u>22,705</u>	<u>29,587</u>	<u>2,846</u>	<u>2,795</u>
Debt to group enterprises		-	-	22,395	35,863
Debt to financial institutions		38,010	36,090	-	-
Prepayments received from customers		17,078	22,750	-	-
Trade payables		53,583	49,587	-	-
Corporate income tax		1,919	1,047	1,919	-
Other payables		27,798	24,734	1,433	4,578
Accruals		<u>50,860</u>	<u>47,266</u>	<u>-</u>	<u>-</u>
Short-term liabilities		<u>189,248</u>	<u>181,473</u>	<u>25,747</u>	<u>40,441</u>
Total liabilities		<u>213,064</u>	<u>212,190</u>	<u>28,593</u>	<u>43,236</u>
Total equity and liabilities		<u>377,790</u>	<u>349,450</u>	<u>181,637</u>	<u>174,820</u>

Other financial commitments	15
Related parties	16
Cash flow - regulation	17
Accounting policies	18

Equity statement

	Group				
	Share capital	Retained earnings	Proposed dividend	Minority interests	Total
	(DKK '000)	(DKK '000)	(DKK '000)	(DKK '000)	(DKK '000)
Equity at 1 January	1,501	130,083	-	5,676	137,260
Paid out dividend	-	-	-	-	-
Exchange rate conversion	-	506	-	-	506
Other adjustments	-	-	-	-	-
Result for the year	-	20,954	-	6,006	26,960
Equity at 31 December	<u>1,501</u>	<u>151,543</u>	<u>-</u>	<u>11,682</u>	<u>164,726</u>

Parent

	Share capital	Net revaluation using the equity method	Retained earnings	Proposed dividend	Total
	(DKK '000)	(DKK '000)	(DKK '000)	(DKK '000)	(DKK '000)
Equity at 1 January	1,501	-	130,083	-	131,584
Paid out dividend	-	-	-	-	-
Exchange rate conversion	-	-	-236	-	-236
Result for the year	-	-	9,697	12,000	21,697
Equity at 31 December	<u>1,501</u>	<u>-</u>	<u>139,543</u>	<u>12,000</u>	<u>153,044</u>

The share capital is divided into 150,100 class A shares and 1,350,600 B shares. Both A and B shares are distributed in DKK 50 or multiples thereof. The A-shares are preference shares. Shares with right to dividend.

Cash flow

	Note	Group	
		2023	2022
		(DKK '000)	(DKK '000)
Result before tax		30,178	9,515
Adjustments	17	2,533	21,430
Changes in receivables		-15,775	-56,459
Changes in trade payables and other payables		4,983	17,316
Cash flow from operations before financial items		21,919	-8,198
Financial income payments		3,985	854
Financial expenses payments		-2,545	-512
Cash flow from operations		23,359	-7,856
Paid corporate tax		-3,672	-802
Cash flow from operating activities		19,687	-8,658
Purchase of intangible fixed assets		-10,941	-5,837
Sale of intangible fixed assets		-	510
Purchase of tangible fixed assets		-6,765	-3,541
Sale of tangible fixed assets		47	1,556
Purchase of financial fixed assets		-6,104	-10,471
Sale of financial fixed assets		3,707	-
Securities purchase		-	-
Securities sale		7,765	12,657
Deposit		-32	-13
Cash flow from investment activity		-12,323	-5,139
Paid dividend		-1,411	-977
Received dividend associated investment		-	-
Payment / raising of current debt		-4,962	21,734
Cash flow from Financing activity		-6,373	20,757
Cash flow changes		991	6,960
Cash on 1. January		54,192	47,232
Cash on 31. December		55,183	54,192

Notes

Note 1 – Revenue	Group		Group total
	Denmark	Other countries EU	
	(DKK '000)	(DKK '000)	(DKK '000)
Geographic Markets 2023	193,992	667,795	861,787
Geographic Markets 2022	201,100	261,120	462,220

	Group		Parent	
	2023	2022	2023	2022
	(DKK '000)	(DKK '000)	(DKK '000)	(DKK '000)
Note 2 – Fees to parent company auditor				
Fees regarding statutory audit	407	388	58	61
Tax advice	374	103	374	-
Fees, total	781	491	432	61
Note 3 - Staff costs				
Wages	80,646	62,150	-	-
Pension	2,654	1,426	-	-
Other social security costs	8,091	7,054	-	-
Staff costs, total	91,391	70,630	-	-
Average number of employees	326	286	-	-

Note 4 - Intangible fixed assets

	Group		
	Software	Licenses	Goodwill
	(DKK '000)	(DKK '000)	(DKK '000)
Cost at 1. January	32,296	2,728	73,269
Additions	8,537	134	2,270
Disposals	-1,494	-	-
Currency exchange	2,299	44	-
Cost at 31. December	41,638	2,906	75,539
Depreciation 1 January	22,529	2,119	62,864
Depreciation	5,027	177	3,181
Disposals	-1,494	-	-
Currency exchange	1,736	48	-
Depreciation 31 December	27,798	2,344	66,045
Net value 31. December	13,840	562	9,494

Notes

	Group		
	Furnishing of rented premises	Land and Buildings	Equipment, fixtures and fittings
	(DKK '000)	(DKK '000)	(DKK '000)
Note 5 - Tangible fixed assets			
Cost at 1. January	5,159	19,390	35,916
Additions	208	4,700	1,857
Disposals	-	-83	-240
Currency exchange	169	149	297
Cost at 31. December	<u>5,536</u>	<u>24,156</u>	<u>37,830</u>
Depreciation 1 January	4,534	2,405	27,618
Depreciation	244	283	2,771
Disposals	-	-83	-193
Currency exchange	149	63	244
Depreciation 31 December	<u>4,927</u>	<u>2,668</u>	<u>30,440</u>
Net value 31. December	<u>609</u>	<u>21,488</u>	<u>7,390</u>

Note 6 - Financial fixed assets

	Group		Parent
	Associated enterprises	Other invest- ments	Group enter- prises
	(DKK '000)	(DKK '000)	(DKK '000)
Cost at 1. January	37,519	23,472	83,610
Additions		6,104	9,000
Disposals	-656	-3,051	-
Cost at 31. December	<u>36,863</u>	<u>26,525</u>	<u>92,610</u>
Write-ups and write-downs on 1. January, net	-9,363	-2,991	6,246
Dividend			-20,000
Share of profit for the year after tax	3	539	14,879
Amortisation on group goodwill for the year	-	-	-
Exchange rate conversion	-	-	-236
Disposals	-	-	-
Net revaluation at 31. December	<u>-9,360</u>	<u>-2,452</u>	<u>889</u>
Accounting value at 31. December	<u>27,503</u>	<u>24,073</u>	<u>93,499</u>

Notes

Note 6 - Financial fixed assets

Group enterprises (group)	Registered of- fice	Voting & ownership share	Result	
			Result	Equity
Weco Invest A/S	Copenhagen	100%	15,463	85,824
Weco-Travel International A/S	Copenhagen	100%	12,985	39,043
Weco-Travel CEE A/S	Copenhagen	82%	20,383	42,260
Weco-Travel Sp z.o.o.	Poland	100%	9,692	21,756
Weco-Travel (cz) s.r.o.	Czech Republic	100%	3,772	4,591
Weco-Travel Kft	Hungary	100%	2,794	2,013
Weco T.M.C.	Romania	75%	2,594	10,291
Travel House A/S	Copenhagen	100%	-2,338	-24,210
Travel House Group A/S	Copenhagen	100%	-2,293	-28,093
Profil Rejser	Copenhagen	100%	-993	-5,949
Travel House Pro Holding A/S	Copenhagen	100%	-38	587
Travel House Professional ApS	Copenhagen	100%	79	4,284
WEBO ApS	Copenhagen	100%	-583	5,373
Weca Holding ApS	Copenhagen	100%	-27	963

Group enterprises (Parent)	Registered of- fice	Voting & ownership share	Result	
			Result	Equity
Weco Invest A/S	Copenhagen	100%	15,463	85,924
WEBO ApS	Copenhagen	100%	-583	5,373

Associated enterprises (Group)	Registered office	Voting/own- ership share	
		Registered office	Voting/own- ership share
WEBS ApS	Ringsted		50.00%
Damptech A/S	Lyngby		26.99%
EQ Holding ApS	Lyngby		21.43%

	Group		Parent	
	2023	2022	2023	2022
	(DKK '000)	(DKK '000)	(DKK '000)	(DKK '000)
Note 7 – Financial income				
Interest, bank	644	91	2	-
Currency exchange	1,255	453	-	-
Dividends, price adjustment securities etc.	9,481	1,267	9,405	1,267
Other financial items	1,018	1,394	984	1,351
Financial income, total	<u>12,398</u>	<u>3,205</u>	<u>10,391</u>	<u>2,618</u>

Notes

	Group		Parent	
	2023 (DKK '000)	2022 (DKK '000)	2023 (DKK '000)	2022 (DKK '000)
Note 8 - Financial expenses				
Interest, bank	2,025	2,531	-	1
Interest, real estate	200	58	154	13
Currency exchange	-	-	16	20
Price adjustment securities etc.	-	12,920	-	13,368
Other financial items	320	274	204	297
Interest, Group enterprises	-	-	689	1,023
Financial expenses, total	<u>2,545</u>	<u>15,783</u>	<u>1,063</u>	<u>14,721</u>
Note 9 - Tax on results for the year				
Current tax of the year	2,523	2,665	1,919	3,244
Regulation of deferred tax	695	1,234	-	-
Tax previous year	-	-	93	155
Tax on results for the year, total	<u>3,218</u>	<u>1,431</u>	<u>2,012</u>	<u>3,089</u>
Note 10 - Proposed distribution of results				
Minority interests' share of profit for the year	6,006	5,740	-	-
Dividend	-	-	12,000	-
Retained earnings	20,954	2,344	9,697	1,867
Reserve net evaluation using the equity method	-	-	-	-
	<u>26,960</u>	<u>8,084</u>	<u>21,697</u>	<u>1,867</u>
Note 11 - Deferred tax asset				

Note 11 - Deferred tax asset

The Group has as of 31 December 2023 recognised deferred tax assets of DKK 10.259 thousands (2022: DKK 9.201 thousands). The deferred tax assets primarily relate to losses carried forward from previous years.

The deferred tax assets are recognised based on the expectation that they can be utilised in earnings for the coming years.

Notes

Note 12 - Securities

Listed shares

Fair value, end DKK
31.051.

Value adjustment in the income statement DKK 5.328.

Listed bonds

Fair value, end DKK
17.339.

Value adjustment in the income statement DKK 1.565.

Unlisted bonds

Fair value, end DKK
6.963.

Value adjustment in the income statement DKK 930.

	Group	
	2023 (DKK '000)	2022 (DKK '000)
Note 13 - Deferred tax		
1. January	1,130	1,235
Displacement	-19	-105
31. December	1,111	1,130

Note 14 - Long-term liabilities

	year 1-5	> year 5	Total
		Group	
Mortgage institution	-	7,777	7,777
Other liabilities	14,927	-	14,927
Total	14,927	7,777	22,704
		Parent	
Mortgage institution		2,847	2,847

Note 15 - Other financial commitments

	Group		Parent	
	2023 (DKK '000)	2022 (DKK '000)	2023 (DKK '000)	2022 (DKK '000)
Rent liabilities etc	20,900	7,078	-	-
Guarantees	2,727	5,500	-	-

Notes

Note 15 - Other financial commitments

The company has made investment commitments of KDKK 9.212.

The Group companies Weco Invest A/S, Weco-Travel International A/S and Weco-Travel CEE A/S are guarantors for fulfilling each other's balance with a bank connection. Weco-Travel CEE's share capital incl. voting rights are also provided as collateral for the company's bank connection.

The Group's Danish companies are jointly and severally liable for tax on the Group's jointly taxed income, etc. The company is a management company in relation to joint taxation.

Note 16 - Related parties

All transactions with related parties have been on market terms.

The real owner is Ditlev Wedell-Wedellsborg, Rigensgade 9B, 1316 Copenhagen K, which has the majority of votes.

Note 17 - Cash flow adjustments

	2023	2022
	(DKK '000)	(DKK '000)
Financial income	-12,398	-3,205
Financial expenses	2,545	15,783
Depreciation	11,671	9,982
Value adjustment associated enterprises and other investments	715	-1,130
	<u>2,533</u>	<u>21,430</u>

Notes

Note 18 - Accounting policies

The consolidated financial statements have been prepared in accordance with the provision of the Danish Financial Statements Act, applying to enterprises of reporting class C Large.

The accounting policies applied remain unchanged from last year.

The consolidated financial statement is presented in DKK.

Recognition and measurement

Income is recognised in the income statement as earned, including value adjustments of financial assets and liabilities. All expenses including depreciation / amortisation and impairment losses are recognised in the income statement.

Assets and liabilities are recognised in the statement of financial position when it is probable that future economic benefits will flow to or flow out of the company and when the value of the asset or liability can be measured reliably.

On initial recognition, assets and liabilities are recognised at cost. Subsequently, assets and liabilities are measured as described below for each item.

Recognition and measurement take into account predictable losses and risks occurring before the presentation of the Annual Report which confirm or invalidate affairs and conditions existing at the balance sheet date.

Basis of consolidation

The Consolidated Financial Statements comprise Niki Invest ApS, and subsidiaries in which the Company directly or indirectly holds more than 50% of the votes or in which the Company, through share ownership or otherwise, exercises control.

On consolidation, items of a similar nature are combined. Elimination is made of intercompany income and expenses, shareholdings, dividends, and accounts as well as of realised and unrealised profits and losses on transactions between the consolidated enterprises. The Company's investments in the consolidated subsidiaries are set off against the Company's share of the net asset value of subsidiaries stated at the time of consolidation.

On acquisition of subsidiaries, the difference between cost and net asset value of the enterprise acquired is determined at the date of acquisition after the individual assets and liabilities having been adjusted to fair value (the purchase method). This includes allowing for any restructuring provisions determined in relation to the enterprise acquired. Any remaining positive differences are recognized in intangible assets in the balance sheet as goodwill, which is amortized in the income statement on a straight-line basis over its estimated useful life, but not exceeding 10 years. Any remaining negative differences are recognized in deferred income in the balance sheet as negative goodwill. Amounts attributable to expected losses or expenses are recognized as income in the income statement as the affairs and conditions to which the amounts relate materialize.

Accounting policies

Negative goodwill not related to expected losses or expenses is recognized at an amount equal to the fair value of non-monetary assets in the income statement.

Positive and negative differences from enterprises acquired may, due to changes to the recognition and measurement of net assets, be adjusted until the end of the financial year following the year of acquisition. These adjustments are also reflected in the value of goodwill or negative goodwill, including in amortization already made.

Foreign currency translation

Transactions denominated in other currencies than Danish kroner are translated at the exchange rate at the date of transaction. Exchange differences arising between the rate on the date of transaction and the rate on the payment day are recognised in the income statement as financial income or financial expenses.

Receivables, payables and other monetary items denominated in other currencies than Danish kroner that have not been settled at the balance sheet date are translated by applying the exchange rates at the balance sheet date. Differences arising between the rate at the balance sheet date and the rate at the date of the arising of the receivable or payable are recognised in the income statement under financial income and expenses.

With regard to foreign enterprises, the income statements are translated at an average exchange rate for the year (or shorter owner period) and the balance sheet items are translated at the exchange rate at the balance sheet date. Differences arising in connection with translation of the foreign subsidiaries' equity at the beginning of the year (or later acquisition date) at the rate at the balance sheet date and in connection with translation of the income statements from average exchange rate to the rate at the balance sheet date are recognised directly in equity.

Segment information

No segment information other than geographical breakdown is provided as the company considers its activities a segment.

The income statements

Revenue

Net revenue from sales of business travels and related services is recognized in the income statement when delivery and transfer of risk have been made.

Net revenue is recognized exclusive of VAT and net of discounts relating to sales.

Other income

Other operating income and costs comprise items secondary to the principal activities of the enterprises, including gains and losses on disposal of intangible assets and property, plant and equipment. Gains and losses on disposal of intangible assets and property, plant and equipment are computed as the sales price less disposal costs and the carrying amount at the disposal date.

Accounting policies

Gross profit

Gross profit comprises revenue with deduction of directly related costs, other income and other external expenses.

Staff costs

Staff costs include wages and salaries, social expenses and pensions.

Other external expenses

Other external costs include costs for administration, premises operating leases expenses, etc.

Net financials

Financial income and financial expenses include interest receivable and payable, realised and unrealised exchange gains and losses on transactions denominated in foreign currencies, and charges and reimbursements related to the Danish Scheme for Payment of Tax on Account etc.

Corporation tax and deferred tax

The company is jointly taxed with the ultimate parent and all the parent company's other Danish subsidiaries. The Danish corporation tax is allocated between the jointly taxed Danish companies with the portion of taxes related to their taxable incomes (full allocation with refund regarding tax losses).

Tax on results for the year which comprises current tax and changes in deferred tax is recognised in the income statement with the portion of taxes related to the taxable income for the year whereas the portion attributable to entries on equity is recognised directly in equity.

The statement of financial position

Intangible assets

Goodwill is amortized on a straight-line basis over the estimated useful life determinate on the basis of management expectations, not exceeding 10 years.

The carrying value of goodwill is regularly assessed and written down to value in use if the carrying value exceeds the estimated future net revenues from the business or activity to which the goodwill relates.

Acquired intellectual property rights in the form of licenses are measured at cost less accumulated depreciation. Licenses are amortized over the period, not exceeding 20 years.

Acquired intellectual property rights in the form of software are measured at cost less accumulated depreciation. Software is amortized over its useful life, not exceeding 7 years.

Tangible fixed assets

Leasehold improvements, land, buildings and fixtures and equipment are measured at cost less accumulated depreciation and amortization.

The basis for depreciation is cost less estimated residual value at end of useful life.

Accounting policies

Cost comprises purchase price and any costs directly attributable to the acquisition until the date the asset is ready for use.

Assets are depreciated by the straight-line method over the expected useful lives as follows:

Leasehold improvements	5 years
Other fixtures and equipment	3-5 years
Buildings	20-50 years
Land is not depreciated	

Financial assets

Investments in group enterprises (in parent company)

The proportionate share of the individual enterprises' results after tax is recognised in the parent's income statement.

In the statement of financial position, investments in group enterprises are measured at the proportionate share of the group enterprises' equity calculated in accordance with the parent's accounting policies.

Net revaluation of investments in group enterprises is transferred under equity to reserves for net revaluation by the equity method to the extent the financial value exceeds the acquisition price less impairment on goodwill

Companies with negative equity are recognized at DKK nil and possibly receivable from these companies are written down by the parent's share of the negative equity to the extent it is deemed uncollectible. If the negative equity value exceeds the receivables, the remaining amount under provisions to the extent that the parent has a legal or constructive obligation to cover the subsidiary's balance sheet

Acquisition or establishment of enterprises are recognised in the annual report from the date of acquisition. Divested or terminated enterprises are recognised to the date of disposal.

The purchase method is applied in connection with acquisition of new enterprises after which the newly acquired enterprises' identified assets and liabilities are measured at fair value at the date of acquisition. Positive differences (goodwill) between acquisition price and market value of acquired assets and assumed liabilities are recognised under investments in group enterprises and are amortised after an individual estimation of the economic life, maximum 10 years.

Other investments

Other investments are measured at estimated fair value. In the event of material uncertainty, the cost price is recognized.

Dividends received by the company from other investments are recognized under financial items in the income statement. However, to the extent that dividends distributed exceed accumulated earnings after the acquisition date, the dividend is, however, recognized as a write-down on the cost of the investment.

Accounting policies

The fair value of investment funds is determined on the basis of the intrinsic value of the funds according to the annual report or the latest reporting. The annual report for the funds has been prepared in accordance with the recognition and measurement criteria in the IPEV valuation guidelines. Among the techniques used by the investment funds, e.g. mention multiple calculations, DCF calculations and other calculations, e.g. based on specific sales in the market and capital increases in the companies in question. Niki Invest uses the value of the investments received from the investment associations, where the investments are calculated at fair values.

Receivables

Receivables are measured at amortised cost which usually equals nominal value. Write down is made to net realisable value to meet expected losses.

Prepayments

Prepayments recognized under assets comprise costs incurred concerning subsequent financial years.

Accruals

Accruals recognized under assets comprise expenses incurred relating to subsequent financial years.

Other securities and investments

Securities recognized under current assets are measured at estimated fair value at the balance sheet date.

Current and deferred tax

Current tax liabilities and current tax receivable are recognised in the statement of financial position as tax calculated on the taxable income for the year adjusted for tax on previous years' taxable income and taxes paid on account.

Deferred tax is measured at temporary differences between the carrying amount and the tax base of assets and liabilities measured on the basis of the planned use of the asset or settlement of the liability, respectively.

Deferred tax assets including the tax value of tax loss carry forwards are measured at the expected realisable value.

Deferred tax is measured on the basis of the tax rules and tax rates in force at the balance sheet date when the deferred tax is expected to crystallise as current tax.

Equity

Dividends expected distributed for the year are shown as a separate item under equity.

Payables

Payables are measured at amortised cost which usually equals nominal value.

Prepayments

Prepayments received regarding subsequent financial year.

Accounting policies

Accruals

Accruals recognized under liabilities comprise income received in subsequent financial years.

Cash flow statement

Cash flow statement is not prepared pursuant to section 86, subsection 4, of the Danish Financial Statements Act, as such statement is prepared for the ultimate group.

Cash flow from operating activities

Cash flows from operating activities are calculated as net profit for the year, adjusted for non-cash operating items, changes in working capital and paid corporate tax.

Cash flow from investment activity

Cash flows from investing activities include payment in connection with the purchase and sale of companies and activities as well as the purchase and sale of intangible, tangible and financial fixed assets and securities.

Cash flow from financing activity

Cash flows from financing activities include changes in the size or composition of share capital and related costs, as well as the raising of loans, repayments on interest-bearing debt and payment of dividends to shareholders.

Cash and cash equivalents

Cash and cash equivalents include cash and short-term securities that can be converted into cash and cash equivalents, and where there is only insignificant risk of changes in value.

Key ratios

The key figures in the financial statements and financial statements are calculated as follows:

Contribution margin	$\frac{(\text{Revenue} - \text{cost on sales}) \times 100}{\text{Revenue}}$
Gross margin	$\frac{\text{Gross profit} \times 100}{\text{Revenue}}$
EBITDA-margin	$\frac{(\text{Result before financials} + \text{depreciation}) \times 100}{\text{Revenue}}$
Operating margin	$\frac{\text{Result before financials} \times 100}{\text{Revenue}}$
Return on assets	$\frac{\text{Result before financials} \times 100}{\text{Average operating assets}}$
Solidity	$\frac{\text{Equity, year end} \times 100}{\text{Liabilities, year end}}$
Return on equity	$\frac{\text{Result before tax} \times 100}{\text{Average equity}}$