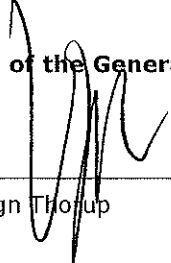


**ACO Nordic Group A/S**  
Thorsvej 9  
4100 Ringsted  
Central Business Registration  
No 20304510

## **Annual report 2016**

The Annual General Meeting adopted the annual report on 30.05.2017

**Chairman of the General Meeting**



---

Name: Vagn Thorup

## Contents

	<b><u>Page</u></b>
Entity details	1
Statement by Management on the annual report	2
Independent auditor's report	3
Management commentary	6
Consolidated income statement for 2016	11
Consolidated balance sheet at 31.12.2016	12
Consolidated statement of changes in equity for 2016	14
Consolidated cash flow statement for 2016	15
Notes to consolidated financial statements	16
Parent income statement for 2016	23
Parent balance sheet at 31.12.2016	24
Parent statement of changes in equity for 2016	26
Notes to parent financial statements	27
Accounting policies	33

## Entity details

### Entity

ACO Nordic Group A/S  
Thorsvej 9  
4100 Ringsted

Central Business Registration No: 20304510  
Registered in: Ringsted  
Financial year: 01.01.2016 - 31.12.2016

Phone: +4557666555  
Fax: +4557666556  
Website: [www.aco-nordic.com](http://www.aco-nordic.com)

### Board of Directors

Hans-Julius Ahlmann, Chairman  
Hans-Peter Meyer  
Jens-Uwe Paasch  
Vagn Thorup

### Executive Board

Søren Walther Olsen, Chief Executive Officer  
David Sanchez Mendez

### Auditors

Deloitte Statsautoriseret Revisionspartnerselskab  
Weidekampsgade 6  
P.O. Box 1600  
0900 Copenhagen C

## Statement by Management on the annual report

The Board of Directors and the Executive Board have today considered and approved the annual report of ACO Nordic Group A/S for the financial year 01.01.2016 - 31.12.2016.

The annual report is presented in accordance with the Danish Financial Statements Act.


In our opinion, the consolidated financial statements and the parent financial statements give a true and fair view of the Group's and the Parent's financial position at 31.12.2016 and of the results of their operations and the Group's cash flows for the financial year 01.01.2016 - 31.12.2016.

We believe that the management commentary contains a fair review of the affairs and conditions referred to therein.

We recommend the annual report for adoption at the Annual General Meeting.

Ringsted, 30.05.2017

### Executive Board

  
Søren Walther Olsen  
Chief Executive Officer

  
David Sanchez Mendez

### Board of Directors

  
Hans-Julius Ahlmann  
Chairman

  
Hans-Peter Meyer

  
Jens-Uwe Paasch

  
Vagn Thorup

## Independent auditor's report

### To the shareholder of ACO Nordic Group A/S

#### Opinion

We have audited the consolidated financial statements and the parent financial statements of ACO Nordic Group A/S for the financial year 01.01.2016 - 31.12.2016, which comprise the income statement, balance sheet, statement of changes in equity and notes, including a summary of significant accounting policies, for the Group as well as the Parent, and the consolidated cash flow statement. The consolidated financial statements and the parent financial statements are prepared in accordance with the Danish Financial Statements Act.

In our opinion, the consolidated financial statements and the parent financial statements give a true and fair view of the Group's and the Parent's financial position at 31.12.2016, and of the results of their operations and the consolidated cash flows for the financial year 01.01.2016 - 31.12.2016 in accordance with the Danish Financial Statements Act.

#### Basis for opinion

We conducted our audit in accordance with International Standards on Auditing (ISAs) and the additional requirements applicable in Denmark. Our responsibilities under those standards and requirements are further described in the Auditor's responsibilities for the audit of the consolidated financial statements and the parent financial statements section of this auditor's report. We are independent of the Group in accordance with the International Ethics Standards Board of Accountants' Code of Ethics for Professional Accountants (IESBA Code) and the additional requirements applicable in Denmark, and we have fulfilled our other ethical responsibilities in accordance with these requirements. We believe that the audit evidence we have obtained is sufficient and appropriate to provide a basis for our opinion.

#### Management's responsibilities for the consolidated financial statements and the parent financial statements

Management is responsible for the preparation of consolidated financial statements and parent financial statements that give a true and fair view in accordance with the Danish Financial Statements Act, and for such internal control as Management determines is necessary to enable the preparation of consolidated financial statements and parent financial statements that are free from material misstatement, whether due to fraud or error.

In preparing the consolidated financial statements and the parent financial statements, Management is responsible for assessing the Group's and the Entity's ability to continue as a going concern, for disclosing, as applicable, matters related to going concern, and for using the going concern basis of accounting in preparing the consolidated financial statements and the parent financial statements unless Management either intends to liquidate the Group or the Entity or to cease operations, or has no realistic alternative but to do so.

#### Auditor's responsibilities for the audit of the consolidated financial statements and the parent financial statements

Our objectives are to obtain reasonable assurance about whether the consolidated financial statements and the parent financial statements as a whole are free from material misstatement, whether due to fraud or error, and to issue an auditor's report that includes our opinion. Reasonable assurance is a high level of assurance, but is not a guarantee that an audit conducted in accordance with ISAs and the additional requirements applicable in Denmark will always detect a material misstatement when it exists. Misstatements

## Independent auditor's report

can arise from fraud or error and are considered material if, individually or in the aggregate, they could reasonably be expected to influence the economic decisions of users taken on the basis of these consolidated financial statements and parent financial statements.

As part of an audit conducted in accordance with ISAs and the additional requirements applicable in Denmark, we exercise professional judgement and maintain professional scepticism throughout the audit. We also:

- Identify and assess the risks of material misstatement of the consolidated financial statements and the parent financial statements, whether due to fraud or error, design and perform audit procedures responsive to those risks, and obtain audit evidence that is sufficient and appropriate to provide a basis for our opinion. The risk of not detecting a material misstatement resulting from fraud is higher than for one resulting from error, as fraud may involve collusion, forgery, intentional omissions, misrepresentations, or the override of internal control.
- Obtain an understanding of internal control relevant to the audit in order to design audit procedures that are appropriate in the circumstances, but not for the purpose of expressing an opinion on the effectiveness of the Group's and the Entity's internal control.
- Evaluate the appropriateness of accounting policies used and the reasonableness of accounting estimates and related disclosures made by Management.
- Conclude on the appropriateness of Management's use of the going concern basis of accounting in preparing the consolidated financial statements and the parent financial statements, and, based on the audit evidence obtained, whether a material uncertainty exists related to events or conditions that may cast significant doubt on the Group's and the Entity's ability to continue as a going concern. If we conclude that a material uncertainty exists, we are required to draw attention in our auditor's report to the related disclosures in the consolidated financial statements and the parent financial statements or, if such disclosures are inadequate, to modify our opinion. Our conclusions are based on the audit evidence obtained up to the date of our auditor's report. However, future events or conditions may cause the Group and the Entity to cease to continue as a going concern.
- Evaluate the overall presentation, structure and content of the consolidated financial statements and the parent financial statements, including the disclosures in the notes, and whether the consolidated financial statements and the parent financial statements represent the underlying transactions and events in a manner that gives a true and fair view.
- Obtain sufficient appropriate audit evidence regarding the financial information of the entities or business activities within the Group to express an opinion on the consolidated financial statements. We are responsible for the direction, supervision and performance of the group audit. We remain solely responsible for our audit opinion.

We communicate with those charged with governance regarding, among other matters, the planned scope and timing of the audit and significant audit findings, including any significant deficiencies in internal control that we identify during our audit.

## Independent auditor's report

### Statement on the management commentary

Management is responsible for the management commentary.

Our opinion on the consolidated financial statements and the parent financial statements does not cover the management commentary, and we do not express any form of assurance conclusion thereon.

In connection with our audit of the consolidated financial statements and the parent financial statements, our responsibility is to read the management commentary and, in doing so, consider whether the management commentary is materially inconsistent with the consolidated financial statements and the parent financial statements or our knowledge obtained in the audit or otherwise appears to be materially misstated.

Moreover, it is our responsibility to consider whether the management commentary provides the information required under the Danish Financial Statements Act.

Based on the work we have performed, we conclude that the management commentary is in accordance with the consolidated financial statements and the parent financial statements and has been prepared in accordance with the requirements of the Danish Financial Statements Act. We did not identify any material misstatement of the management commentary.

Copenhagen, 30.05.2017

### Deloitte

Statsautoriseret Revisionspartnerselskab  
Central Business Registration No: 33963556

  
Jens Jørgensen Baes  
State Authorised Public Accountant

  
Max Damborg  
State Authorised Public Accountant

## Management commentary

	<b>2016</b> <b>EUR'000</b>	<b>2015</b> <b>EUR'000</b>	<b>2014</b> <b>EUR'000</b>	<b>2013</b> <b>EUR'000</b>	<b>2012</b> <b>EUR'000</b>
<b>Financial highlights</b>					
<b>Key figures</b>					
Revenue	77.419	73.733	73.665	71.187	71.974
Gross profit/loss	27.120	25.184	25.201	23.457	24.874
Operating profit/loss	6.172	4.874	4.085	2.311	2.733
Net financials	(535)	(650)	(1.536)	(615)	(692)
Profit/loss for the year	4.257	3.623	2.599	1.451	2.575
Total assets	43.412	44.561	44.495	44.284	41.841
Investments in property, plant and equipment	2.151	1.827	1.098	2.838	1.915
Equity incl minority interests	23.612	21.065	19.028	17.418	17.067
Cash flows from (used in) operating activities	4.868	6.196	4.961	2.379	1.821
Cash flows from (used in) investing activities	(2.205)	(1.720)	(1.050)	3.316	(2.262)
Cash flows from (used in) financing activities	97	(4.708)	(893)	311	(2.215)
Employees in average	326	305	315	316	329
<b>Ratios</b>					
Gross margin (%)	35,0	34,2	34,2	33,0	34,6
Net margin (%)	5,5	4,9	3,5	2,0	3,6
Return on equity (%)	19,1	18,1	14,3	8,4	15,1
Equity ratio (%)	54,4	47,3	42,8	39,3	40,8

Financial highlights are defined and calculated in accordance with "Recommendations & Ratios 2015" issued by the Danish Society of Financial Analysts.

<b>Ratios</b>	<b>Calculation formula</b>	<b>Ratios</b>
Gross margin (%)	$\frac{\text{Gross profit/loss} \times 100}{\text{Revenue}}$	The entity's operating gearing.
Net margin (%)	$\frac{\text{Profit/loss for the year} \times 100}{\text{Revenue}}$	The entity's operating profitability.
Return on equity (%)	$\frac{\text{Profit/loss for the year} \times 100}{\text{Average equity incl minority interests}}$	The entity's return on capital invested in the entity by the owners.
Equity ratio (%)	$\frac{\text{Equity incl minority interests} \times 100}{\text{Total assets}}$	The financial strength of the entity.



## Management commentary

### Primary activities

The ACO Nordic Group operates on the North European market for construction materials, which comprise drainage solutions and different roofing solutions, including roof guttering solutions for private homes and industrial properties. The activities also include windows and doors.

ACO Nordic Group A/S owns four companies in Denmark: ACO Nordic A/S, ACO Servicepartner ApS, Plastmo A/S and Hvidbjerg I A/S as well as a number of foreign subsidiaries.

The primary activities of ACO Nordic Group A/S are to provide strategic leadership and other shared services (including IT and Finance) to all its subsidiaries in the Nordic and Baltic geographical areas.

### Development in activities and finances

Total revenue amounts to EUR 77,419 thousand, which is an increase of EUR 3,686 thousand compared to last year.

Profit for the year after tax is EUR 4,257 thousand.

Revenue and results are slightly better than the expectations and are considered satisfactory by Management.

### Uncertainty relating to recognition and measurement

The valuation of assets and liabilities is made in accordance with current accounting policies, and Management is of the opinion that no uncertainty is related to recognition and measurement.

### Unusual circumstances affecting recognition and measurement

There have been no unusual circumstances affecting recognition and measurement in the financial year 2016.

### Outlook

The construction market environment is expected to stay positive, however in some countries with more modest growth than what was seen in 2016. The Group invested in IT and sales and marketing activities in 2016. These investments are expected to support further improvement in revenue and performance in 2017.

### Particular risks

#### Operating risks

The Group is affected by fluctuations in the purchase price of raw materials, especially PVC and zinc.

Because of recent years' significant fluctuations in raw material prices, it has become difficult to secure favourable agreements over a longer period of time.

## Management commentary

### Exchange rate exposure

The Group is affected by fluctuations in exchange rates in relation to trading and net investments in foreign currencies. The risk is managed by way of selective hedging.

### Interest rate risk

The Group's interest-bearing long-term debt is hedged in order to avoid any uncertainties regarding future interest rate liabilities. The risk is hedged by way of interest rate swaps.

In general, the Group's interest-bearing short-term debt carries a floating interest rate, which means that the interest rate remains unlocked for a period of 12 months. In turn, this means that the Group's interest expenses will decrease when the interest rate declines.

### Credit risks

The Group has large individual customers in several countries. Any changes in the business relationship with these customers will have an effect on the Group's earnings. Credit insurance has been taken out in relation to all of these customers.

### Intellectual capital resources

The individual core business areas manage their own product development. Where appropriate experience and business opportunities are shared. In addition, the Group offers staff education programmes to strengthen both professional and personal qualifications.

### Foreign branches

The Group has a branch in Finland; Plastmo A/S Sivuliike Soumessa. The primary activity of the Branch is the sale of goods manufactured by Plastmo A/S such as construction materials, which comprise roof guttering solutions and roofing solutions as well as do-it-yourself drainage solutions. The target market is mainly private consumers and professional workmen.

### Statutory report on corporate social responsibility

Management has decided not to prepare and implement policies on CSR in accordance with section 99a of the Danish Financial Statements Act. The opt-out is based on an assessment of human resource efforts and importance to a business like ACO Nordic Group A/S.

### Statutory report on the underrepresented gender

On behalf of the Group, the Board of Directors of ACO Nordic Group A/S has decided on the following policies on and targets for the underrepresented gender in executive positions:

### Target figures for the underrepresented gender at the board of directors

When new members are appointed to the individual board of directors of the ACO Nordic Group, emphasis is placed on qualifications, international experience and diversity. The Group's target is to increase the number of female board members representing at least 20% over a four-year period until 2017.

## Management commentary

### Report on target achievement

The Group's target figure for distribution by gender at board level remains unachieved given that only the male gender is represented. Management expects to achieve the target before the end of 2017, as the future composition of the board of directors is in focus.

### Policies on the underrepresented gender at other management levels

It is the Company's policy to increase the number of women at the other management levels of the Group; consisting of the corporate management team and the Danish management group. However, the candidates are selected based on an overall assessment of who is best suited for running and managing the Group thus achieving its strategic and economic goals.

Management has found no need to change the managerial mix of the two groups, but the policy has been integrated in the work of management.

### Events after the balance sheet date

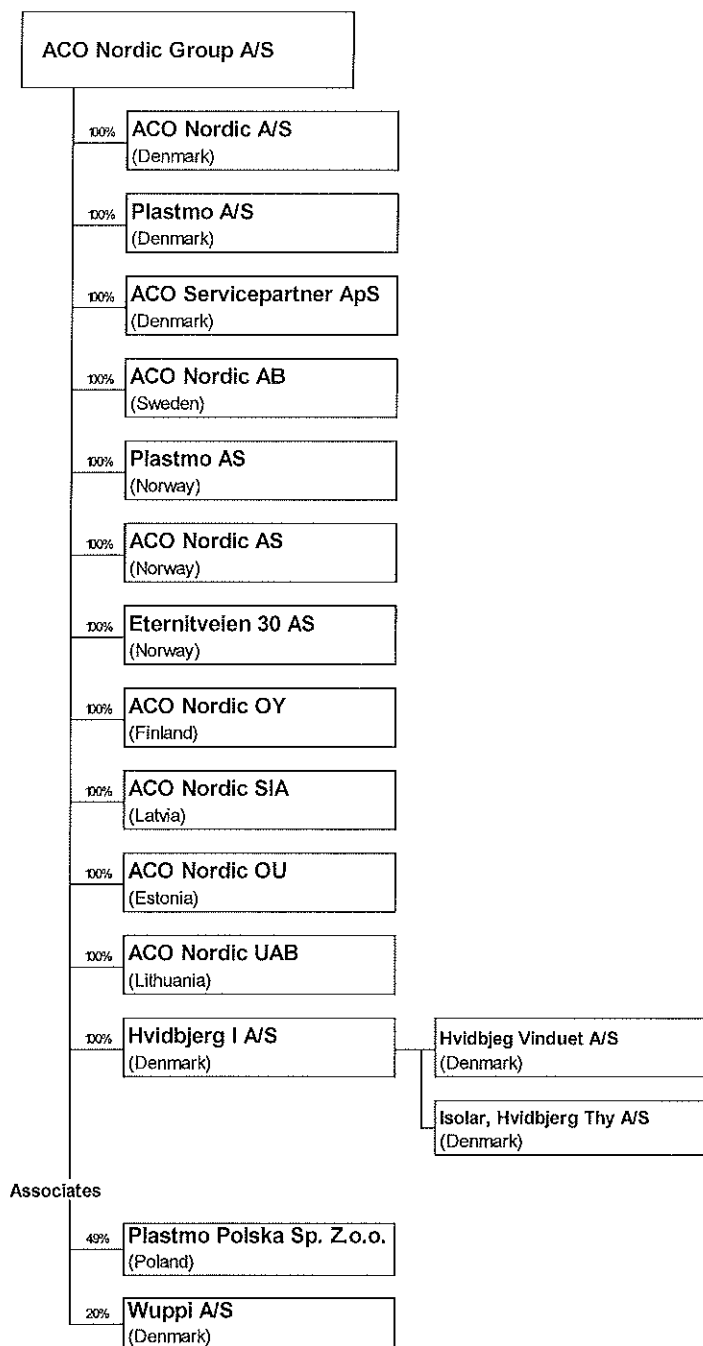
On 21 February 2017, ACO Nordic Group A/S acquired the remaining shares of the associate Plastmo Polska Sp. Z.o.o. From this date on Plastmo Polska Sp. Z.o.o. will be incorporated as a wholly owned subsidiary.

No further events have occurred after the balance sheet date to this date which would influence the evaluation of this annual report.

## Management commentary

### Group relations

The ownership structure of ACO Nordic Group is:



These financial statements are included in the consolidated financial statements of ACO Severin Ahlmann GmbH & Co. KG, Rendsburg, Germany.

## Consolidated income statement for 2016

	<u>Notes</u>	<u>2016 EUR'000</u>	<u>2015 EUR'000</u>
Revenue	1	77.419	73.733
Production costs	4	(50.299)	(48.549)
<b>Gross profit/loss</b>		<b>27.120</b>	<b>25.184</b>
Distribution costs		(14.540)	(14.558)
Administrative costs	2, 3	(6.290)	(5.976)
Other operating income		512	863
Other operating expenses		(630)	(639)
<b>Operating profit/loss</b>		<b>6.172</b>	<b>4.874</b>
Income from investments in associates		(139)	(141)
Other financial income	5	551	299
Other financial expenses	6	(947)	(808)
<b>Profit/loss before tax</b>		<b>5.637</b>	<b>4.224</b>
Tax on profit/loss for the year	7	(1.380)	(601)
<b>Profit/loss for the year</b>	8	<b>4.257</b>	<b>3.623</b>

## Consolidated balance sheet at 31.12.2016

	<u>Notes</u>	<u>2016 EUR'000</u>	<u>2015 EUR'000</u>
Completed development projects		404	368
Acquired intangible assets		79	138
Goodwill		0	0
<b>Intangible assets</b>	9	<u>483</u>	<u>506</u>
Land and buildings		4.005	4.084
Other fixtures and fittings, tools and equipment		4.580	4.188
Property, plant and equipment in progress		1.196	1.009
<b>Property, plant and equipment</b>	10	<u>9.781</u>	<u>9.281</u>
Receivables from group enterprises		4.546	6.595
Investments in associates		320	475
Deferred tax	13	2.677	3.599
<b>Fixed asset investments</b>	11	<u>7.543</u>	<u>10.669</u>
<b>Fixed assets</b>		<u>17.807</u>	<u>20.456</u>
Raw materials and consumables		1.904	1.606
Work in progress		102	69
Manufactured goods and goods for resale		5.620	5.422
<b>Inventories</b>		<u>7.626</u>	<u>7.097</u>
Trade receivables		15.373	13.914
Receivables from group enterprises		82	189
Other receivables		795	402
Prepayments	14	495	337
<b>Receivables</b>		<u>16.745</u>	<u>14.842</u>
<b>Cash</b>		<u>1.234</u>	<u>2.166</u>
<b>Current assets</b>		<u>25.605</u>	<u>24.105</u>
<b>Assets</b>		<u>43.412</u>	<u>44.561</u>

## Consolidated balance sheet at 31.12.2016

	<u>Notes</u>	<u>2016 EUR'000</u>	<u>2015 EUR'000</u>
Contributed capital		7.545	7.545
Retained earnings		13.567	11.520
Proposed dividend		2.500	2.000
<b>Equity</b>		<b>23.612</b>	<b>21.065</b>
Deferred tax	13	95	112
Other provisions	15	109	73
<b>Provisions</b>		<b>204</b>	<b>185</b>
Mortgage debts		4.771	4.796
Bank loans		1.090	1.498
Deferred income	16	674	922
<b>Non-current liabilities other than provisions</b>	17	<b>6.535</b>	<b>7.216</b>
Current portion of long-term liabilities other than provisions	17	1.431	950
Bank loans		1.548	5.240
Prepayments received from customers		7	19
Trade payables		2.326	2.567
Payables to group enterprises		1.781	2.005
Other payables		5.968	5.314
<b>Current liabilities other than provisions</b>		<b>13.061</b>	<b>16.095</b>
<b>Liabilities other than provisions</b>		<b>19.596</b>	<b>23.311</b>
<b>Equity and liabilities</b>		<b>43.412</b>	<b>44.561</b>
Associates	12		
Unrecognised rental and lease commitments	19		
Contingent liabilities	20		
Mortgages and securities	21		
Transactions with related parties	22		
Group relations	23		
Subsidiaries	24		

## Consolidated statement of changes in equity for 2016

	Contributed capital EUR'000	Retained earnings EUR'000	Proposed dividend EUR'000	Total EUR'000
Equity beginning of year	7.545	11.520	2.000	21.065
Ordinary dividend paid	0	0	(2.000)	(2.000)
Exchange rate adjustments	0	94	0	94
Fair value adjustments of hedging instruments	0	251	0	251
Tax of equity postings	0	(55)	0	(55)
Profit/loss for the year	0	1.757	2.500	4.257
<b>Equity end of year</b>	<b>7.545</b>	<b>13.567</b>	<b>2.500</b>	<b>23.612</b>



## Consolidated cash flow statement for 2016

	<u>Notes</u>	<u>2016 EUR'000</u>	<u>2015 EUR'000</u>
Operating profit/loss		6.172	4.874
Amortisation, depreciation and impairment losses		1.825	2.108
Other provisions		35	0
Working capital changes	18	(2.256)	226
Other adjustments		18	(10)
<b>Cash flow from ordinary operating activities</b>		<b>5.794</b>	<b>7.198</b>
Financial income received		551	299
Financial income paid		(947)	(808)
Income taxes refunded/(paid)		(530)	(493)
<b>Cash flows from operating activities</b>		<b>4.868</b>	<b>6.196</b>
Acquisition etc of intangible assets		(180)	(35)
Acquisition etc of property, plant and equipment		(2.151)	(1.827)
Sale of property, plant and equipment		126	142
<b>Cash flows from investing activities</b>		<b>(2.205)</b>	<b>(1.720)</b>
Loans raised		71	0
Instalments on loans etc		(23)	(1.739)
Incurrence of debt to group enterprises		2.049	587
Repayment of debt to group enterprises		0	(1.882)
Dividend paid		(2.000)	(1.672)
Other cash flows from financing activities		0	(2)
<b>Cash flows from financing activities</b>		<b>97</b>	<b>(4.708)</b>
<b>Increase/decrease in cash and cash equivalents</b>		<b>2.760</b>	<b>(232)</b>
Cash and cash equivalents beginning of year		(3.074)	(2.842)
<b>Cash and cash equivalents end of year</b>		<b>(314)</b>	<b>(3.074)</b>
Cash and cash equivalents at year-end are composed of:			
Cash		1.234	2.166
Short-term debt to banks		(1.548)	(5.240)
<b>Cash and cash equivalents end of year</b>		<b>(314)</b>	<b>(3.074)</b>

## Notes to consolidated financial statements

	<b>2016</b> <b>EUR'000</b>	<b>2015</b> <b>EUR'000</b>
<b>1. Revenue</b>		
Denmark	45.484	42.417
Sweden	13.679	13.218
Norway	8.380	8.804
Finland	3.871	3.832
Other countries	6.005	5.462
	<b>77.419</b>	<b>73.733</b>

The Group has only one business segment as described in the management commentary.

	<b>2016</b> <b>EUR'000</b>	<b>2015</b> <b>EUR'000</b>
<b>2. Fees to the auditor appointed by the Annual General Meeting</b>		
Statutory audit services	144	190
Tax services	14	13
Other services	27	39
	<b>185</b>	<b>242</b>

Fee to other auditors amounts to EUR 25 thousand (2015: EUR 25 thousand).

	<b>2016</b> <b>EUR'000</b>	<b>2015</b> <b>EUR'000</b>
<b>3. Staff costs</b>		
Wages and salaries	16.877	16.358
Pension costs	1.772	1.745
Other social security costs	1.149	1.579
	<b>19.798</b>	<b>19.682</b>
Average number of employees	<b>326</b>	<b>305</b>

	<b>Remunera- tion of manage- ment 2016 EUR'000</b>	<b>Remunera- tion of manage- ment 2015 EUR'000</b>
Total amount for management categories	469	468
	<b>469</b>	<b>468</b>

## Notes to consolidated financial statements

	<b>2016</b> <b>EUR'000</b>	<b>2015</b> <b>EUR'000</b>
<b>4. Depreciation, amortisation and impairment losses</b>		
Amortisation of intangible assets	206	345
Depreciation on property, plant and equipment	1.619	1.763
	<b>1.825</b>	<b>2.108</b>
	<b>2016</b> <b>EUR'000</b>	<b>2015</b> <b>EUR'000</b>
<b>5. Other financial income</b>		
Financial income arising from group enterprises	103	146
Other financial income	448	153
	<b>551</b>	<b>299</b>
	<b>2016</b> <b>EUR'000</b>	<b>2015</b> <b>EUR'000</b>
<b>6. Other financial expenses</b>		
Other financial expenses	947	808
	<b>947</b>	<b>808</b>
	<b>2016</b> <b>EUR'000</b>	<b>2015</b> <b>EUR'000</b>
<b>7. Tax on profit/loss for the year</b>		
Tax on current year taxable income	263	730
Change in deferred tax for the year	905	51
Adjustment concerning previous years	212	(174)
Effect of changed tax rates	0	(6)
	<b>1.380</b>	<b>601</b>
	<b>2016</b> <b>EUR'000</b>	<b>2015</b> <b>EUR'000</b>
<b>8. Proposed distribution of profit/loss</b>		
Ordinary dividend for the financial year	2.500	2.000
Retained earnings	1.757	1.623
	<b>4.257</b>	<b>3.623</b>

## Notes to consolidated financial statements

	Completed develop- ment projects EUR'000	Acquired intangible assets EUR'000	Goodwill EUR'000
<b>9. Intangible assets</b>			
Cost beginning of year	612	581	434
Additions	180	0	0
Disposals	0	0	(434)
<b>Cost end of year</b>	<b>792</b>	<b>581</b>	<b>0</b>
Amortisation and impairment losses beginning of year	(244)	(443)	(434)
Exchange rate adjustments	0	3	0
Amortisation for the year	(144)	(62)	0
Reversal regarding disposals	0	0	434
<b>Amortisation and impairment losses end of year</b>	<b>(388)</b>	<b>(502)</b>	<b>0</b>
<b>Carrying amount end of year</b>	<b>404</b>	<b>79</b>	<b>0</b>
	<b>Land and buildings EUR'000</b>	<b>Other fixtures and fittings, tools and equipment EUR'000</b>	<b>Property, plant and equipment in progress EUR'000</b>
<b>10. Property, plant and equipment</b>			
Cost beginning of year	11.778	16.908	1.009
Additions	248	1.716	1.151
Disposals	0	(312)	(964)
<b>Cost end of year</b>	<b>12.026</b>	<b>18.312</b>	<b>1.196</b>
Depreciation and impairment losses beginning of the year	(7.694)	(12.720)	0
Exchange rate adjustments	61	33	0
Depreciation for the year	(388)	(1.231)	0
Reversal regarding disposals	0	186	0
<b>Depreciation and impairment losses end of the year</b>	<b>(8.021)</b>	<b>(13.732)</b>	<b>0</b>
<b>Carrying amount end of year</b>	<b>4.005</b>	<b>4.580</b>	<b>1.196</b>
Recognised assets not owned by entity	-	162	-

## Notes to consolidated financial statements

	Receivables from group enterprises EUR'000	Investments in associates EUR'000	Deferred tax EUR'000
<b>11. Fixed asset investments</b>			
Cost beginning of year	6.595	797	3.599
Additions	(2.049)	0	0
Disposals	0	0	(922)
<b>Cost end of year</b>	<b>4.546</b>	<b>797</b>	<b>2.677</b>
Revaluations beginning of year	0	(322)	0
Exchange rate adjustments	0	(16)	0
Share of profit/loss for the year	0	(139)	0
<b>Revaluations end of year</b>	<b>0</b>	<b>(477)</b>	<b>0</b>
<b>Carrying amount end of year</b>	<b>4.546</b>	<b>320</b>	<b>2.677</b>
<b>12. Associates</b>			
		<b>Registered in</b>	<b>Equity inte- rest %</b>
Wuppi A/S		Denmark	20,0
Plastmo Polska Sp. z.o.o.		Poland	49,0
<b>13. Deferred tax</b>			
		<b>2016 EUR'000</b>	<b>2015 EUR'000</b>
Intangible assets		362	719
Property, plant and equipment		1.515	1.386
Inventories		(15)	(12)
Receivables		(14)	(10)
Provisions		12	16
Liabilities other than provisions		(3)	6
Tax losses carried forward		725	1.382
		<b>2.582</b>	<b>3.487</b>
<b>Changes during the year</b>			
Beginning of year		3.487	
Recognised in the income statement		(905)	
<b>End of year</b>		<b>2.582</b>	

Deferred tax of EUR 2,582 thousand is recognised by a tax asset of EUR 2,677 thousand and a tax liability of EUR 95 thousand.

## Notes to consolidated financial statements

### Assumptions concerning recognition and measurement of tax assets

Deferred tax is mainly incumbent on tax loss carryforwards in the Danish national joint taxation in which the tax losses will be offset against future taxable income. Since the group companies participating in the Danish joint taxation are expected to generate taxable income in the next few years, the recognition criteria of tax assets are considered met.

### 14. Prepayments

Prepayments comprise prepaid expenses, including prepaid expenses regarding remortgaging.

### 15. Other provisions

Other provisions relate to guarantees and provisions for pension and other staff costs.

### 16. Long-term deferred income

Deferred income relates to the fair value of financial instruments.

	<b>Instalments within 12 months 2016 EUR'000</b>	<b>Instalments within 12 months 2015 EUR'000</b>	<b>Instalments beyond 12 months 2016 EUR'000</b>	<b>Outstanding after 5 years EUR'000</b>
<b>17. Liabilities other than provisions</b>				
Mortgage debts	553	551	4,771	2,532
Bank loans	878	399	1,090	0
Deferred income	0	0	674	0
	<b>1.431</b>	<b>950</b>	<b>6.535</b>	<b>2.532</b>

	<b>2016 EUR'000</b>	<b>2015 EUR'000</b>
<b>18. Change in working capital</b>		
Increase/decrease in inventories	(529)	157
Increase/decrease in receivables	(1.904)	366
Increase/decrease in trade payables etc	177	(297)
	<b>(2.256)</b>	<b>226</b>

	<b>2016 EUR'000</b>	<b>2015 EUR'000</b>
<b>19. Unrecognised rental and lease commitments</b>		
Hereof liabilities under rental or lease agreements until maturity in total	<b>2.642</b>	<b>3.092</b>

## Notes to consolidated financial statements

### 20. Contingent liabilities

The Company serves as an administration company in a Danish joint taxation arrangement. According to the joint taxation provisions of the Danish Corporation Tax Act, the Company is therefore liable from the financial year 2013 for income taxes etc for the jointly taxed companies and from 01.07.2012 also for obligations, if any, relating to the withholding of tax on interest, royalties and dividends for these companies.

### 21. Mortgages and securities

Mortgage debt is secured by way of mortgage on properties. The carrying amount of mortgaged properties is EUR 1,414 thousand.

The Group has signed a mutual credit agreement with a financial institution involving a total credit limit of EUR 9,119 thousand. The Group has assumed guarantee of payment of the total credit limit.

The amount drawn from the credit facilities totals EUR 2,024 thousand at 31.12.2016.

	<b>Parent EUR'000</b>	<b>Other related parties. EUR'000</b>
<b>22. Transactions with related parties</b>		
Revenue	50	25
Production costs	7.392	8.683
Distribution costs	33	10
Administrative costs	226	17
Other operating income and expenses	(28)	106
Other financial income	0	103
Receivables	0	4.628
Liabilities other than provisions	0	1.781

Receivables from and payables to group enterprises carry interest at an annual rate of 1.4 to 1.6%.

### 23. Group relations

Name and registered office of the Parent preparing consolidated financial statements for the largest group:

ACO Severin Ahlmann GmbH & Co. KG, Am Ahlmannkai, 24782 Büdelsdorf, Germany

Name and registered office of the Parent preparing consolidated financial statements for the smallest group:

Plastmo Holding GmbH, Am Ahlmannkai, 24782 Büdelsdorf, Germany

## Notes to consolidated financial statements

	<u>Registered in</u>	<u>Equity inter- rest %</u>
<b>24. Subsidiaries</b>		
Plastmo A/S	Ringsted, Denmark	100,0
ACO Nordic A/S	Ringsted, Denmark	100,0
ACO Servicepartner ApS	Ringsted, Denmark	100,0
ACO Nordic AB	Gothenburg, Sweden	100,0
Plastmo AS	Slemmested, Norway	100,0
ACO Nordic AS	Lysaker, Norway	100,0
Eternitveien 30 AS	Slemmested, Norway	100,0
ACO Nordic OY	Vesivahmaa, Finland	100,0
ACO Nordic SIA	Riga, Latvia	100,0
ACO Nordic OU	Talinn, Estonia	100,0
ACO Nordic UAB	Vilnius, Lithuania	100,0
Hvidbjerg I A/S	Hvidbjerg, Denmark	100,0



## Parent income statement for 2016

	<u>Notes</u>	<u>2016 EUR'000</u>	<u>2015 EUR'000</u>
Administrative costs	1, 2	(820)	(2.357)
Other operating income		1.011	2.489
Other operating expenses		(433)	0
<b>Operating profit/loss</b>		<b>(242)</b>	<b>132</b>
Income from investments in group enterprises		5.117	3.734
Income from investments in associates		(139)	(141)
Other financial income	3	141	352
Other financial expenses	4	(517)	(581)
<b>Profit/loss before tax</b>		<b>4.360</b>	<b>3.496</b>
Tax on profit/loss for the year	5	(103)	127
<b>Profit/loss for the year</b>	6	<b>4.257</b>	<b>3.623</b>

## Parent balance sheet at 31.12.2016

	<u>Notes</u>	<u>2016 EUR'000</u>	<u>2015 EUR'000</u>
Completed development projects		405	368
Acquired intangible assets		1	8
<b>Intangible assets</b>	7	<b>406</b>	<b>376</b>
Land and buildings		1.414	1.435
Other fixtures and fittings, tools and equipment		47	40
Property, plant and equipment in progress		520	150
<b>Property, plant and equipment</b>	8	<b>1.981</b>	<b>1.625</b>
Investments in group enterprises		22.287	19.944
Receivables from group enterprises		5.282	3.865
Investments in associates		320	475
Deferred tax	10	2.081	2.036
<b>Fixed asset investments</b>	9	<b>29.970</b>	<b>26.320</b>
<b>Fixed assets</b>		<b>32.357</b>	<b>28.321</b>
Trade receivables		2	0
Receivables from group enterprises		188	4.289
Other receivables		0	2
Prepayments	11	141	143
<b>Receivables</b>		<b>331</b>	<b>4.434</b>

## Parent balance sheet at 31.12.2016

	<u>Notes</u>	<u>2016 EUR'000</u>	<u>2015 EUR'000</u>
Contributed capital		7.545	7.545
Reserve for net revaluation according to the equity method		3.747	0
Retained earnings		9.820	11.520
Proposed dividend		2.500	2.000
<b>Equity</b>		<b>23.612</b>	<b>21.065</b>
Mortgage debts		4.191	4.684
Deferred income	12	674	922
<b>Non-current liabilities other than provisions</b>	<b>13</b>	<b>4.865</b>	<b>5.606</b>
Current portion of long-term liabilities other than provisions	13	509	509
Bank loans		1.548	4.217
Trade payables		113	209
Payables to group enterprises		1.827	856
Other payables	14	329	327
<b>Current liabilities other than provisions</b>		<b>4.326</b>	<b>6.118</b>
<b>Liabilities other than provisions</b>		<b>9.191</b>	<b>11.724</b>
<b>Equity and liabilities</b>		<b>32.803</b>	<b>32.789</b>
Unrecognised rental and lease commitments	15		
Contingent liabilities	16		
Mortgages and securities	17		
Related parties with controlling interest	18		
Transactions with related parties	19		

## Parent statement of changes in equity for 2016

	Contributed capital EUR'000	Reserve for net revaluation according to the equity method EUR'000	Retained earnings EUR'000	Proposed dividend EUR'000
Equity beginning of year	7.545	0	11.520	2.000
Ordinary dividend paid	0	0	0	(2.000)
Exchange rate adjustments	0	0	94	0
Fair value adjustments of hedging instruments	0	0	251	0
Tax of equity postings	0	0	(55)	0
Profit/loss for the year	0	3.747	(1.990)	2.500
<b>Equity end of year</b>	<b>7.545</b>	<b>3.747</b>	<b>9.820</b>	<b>2.500</b>
				<b>Total EUR'000</b>
Equity beginning of year				21.065
Ordinary dividend paid				(2.000)
Exchange rate adjustments				94
Fair value adjustments of hedging instruments				251
Tax of equity postings				(55)
Profit/loss for the year				4.257
<b>Equity end of year</b>				<b>23.612</b>

## Notes to parent financial statements

	<b>2016</b> <b>EUR'000</b>	<b>2015</b> <b>EUR'000</b>
<b>1. Staff costs</b>		
Wages and salaries	1,245	985
Pension costs	94	71
Other social security costs	11	7
	<b>1.350</b>	<b>1.063</b>
Average number of employees	<b>12</b>	<b>9</b>
	<b>Remunera- tion of manage- ment 2016 EUR'000</b>	<b>Remunera- tion of manage- ment 2015 EUR'000</b>
Total amount for management categories	469	468
	<b>469</b>	<b>468</b>
	<b>2016</b> <b>EUR'000</b>	<b>2015</b> <b>EUR'000</b>
<b>2. Depreciation, amortisation and impairment losses</b>		
Amortisation of intangible assets	150	171
Depreciation on property, plant and equipment	258	257
Profit/loss from sale of intangible assets and property, plant and equipment	0	28
	<b>408</b>	<b>456</b>
	<b>2016</b> <b>EUR'000</b>	<b>2015</b> <b>EUR'000</b>
<b>3. Other financial income</b>		
Financial income arising from group enterprises	130	219
Other financial income	11	133
	<b>141</b>	<b>352</b>
	<b>2016</b> <b>EUR'000</b>	<b>2015</b> <b>EUR'000</b>
<b>4. Other financial expenses</b>		
Financial expenses from group enterprises	15	7
Other financial expenses	502	574
	<b>517</b>	<b>581</b>

## Notes to parent financial statements

	<b>2016</b> <b>EUR'000</b>	<b>2015</b> <b>EUR'000</b>
<b>5. Tax on profit/loss for the year</b>		
Change in deferred tax for the year	(136)	(120)
Adjustment concerning previous years	239	0
Effect of changed tax rates	0	(7)
	<b>103</b>	<b>(127)</b>
	<b>2016</b> <b>EUR'000</b>	<b>2015</b> <b>EUR'000</b>
<b>6. Proposed distribution of profit/loss</b>		
Ordinary dividend for the financial year	2.500	2.000
Transferred to reserve for net revaluation according to the equity method	3.747	0
Retained earnings	(1.990)	1.623
	<b>4.257</b>	<b>3.623</b>
	<b>Completed development projects</b> <b>EUR'000</b>	<b>Acquired intangible assets</b> <b>EUR'000</b>
<b>7. Intangible assets</b>		
Cost beginning of year	612	166
Additions	180	0
<b>Cost end of year</b>	<b>792</b>	<b>166</b>
Amortisation and impairment losses beginning of year	(244)	(158)
Amortisation for the year	(143)	(7)
<b>Amortisation and impairment losses end of year</b>	<b>(387)</b>	<b>(165)</b>
<b>Carrying amount end of year</b>	<b>405</b>	<b>1</b>

## Notes to parent financial statements

	Land and buildings EUR'000	Other fixtures and fittings, tools and equipment EUR'000	Property, plant and equipment in progress EUR'000	
<b>8. Property, plant and equipment</b>				
Cost beginning of year	5.122	1.079	150	
Additions	208	34	475	
Disposals	0	0	(105)	
<b>Cost end of year</b>	<b>5.330</b>	<b>1.113</b>	<b>520</b>	
Depreciation and impairment losses beginning of the year	(3.687)	(1.039)	0	
Exchange rate adjustments	2	0	0	
Depreciation for the year	(231)	(27)	0	
<b>Depreciation and impairment losses end of the year</b>	<b>(3.916)</b>	<b>(1.066)</b>	<b>0</b>	
<b>Carrying amount end of year</b>	<b>1.414</b>	<b>47</b>	<b>520</b>	
	<b>Investments in group enterprises EUR'000</b>	<b>Receivables from group enterprises EUR'000</b>	<b>Investments in associates EUR'000</b>	<b>Deferred tax EUR'000</b>
<b>9. Fixed asset investments</b>				
Cost beginning of year	13.719	3.865	797	2.036
Additions	0	1.417	0	45
Disposals	(1.796)	0	0	0
<b>Cost end of year</b>	<b>11.923</b>	<b>5.282</b>	<b>797</b>	<b>2.081</b>
Revaluations beginning of year	6.225	0	(322)	0
Exchange rate adjustments	116	0	(16)	0
Share of profit/loss for the year	5.117	0	(139)	0
Dividend	(1.094)	0	0	0
<b>Revaluations end of year</b>	<b>10.364</b>	<b>0</b>	<b>(477)</b>	<b>0</b>
<b>Carrying amount end of year</b>	<b>22.287</b>	<b>5.282</b>	<b>320</b>	<b>2.081</b>

## Notes to parent financial statements

	<b>Registered in</b>	<b>Equity inte- rest %</b>
Investments in associates comprise:		
Wuppi A/S	Denmark	20,0
Plastmo Polska Sp. z.o.o.	Poland	49,0
	<b>2016</b>	<b>2015</b>
	<b>EUR'000</b>	<b>EUR'000</b>
<b>10. Deferred tax</b>		
Intangible assets	(36)	(86)
Property, plant and equipment	1.486	1.258
Liabilities other than provisions	(4)	(4)
Tax losses carried forward	635	868
	<b>2.081</b>	<b>2.036</b>
<b>Changes during the year</b>		
Beginning of year	2.036	
Recognised in the income statement	45	
<b>End of year</b>	<b>2.081</b>	

### Assumptions concerning recognition and measurement of tax assets

Deferred tax is mainly incumbent on tax loss carryforwards in the Danish national joint taxation in which the tax losses will be offset against future taxable income. Since the group companies participating in the Danish joint taxation are expected to generate taxable income in the next few years, the recognition criteria of tax assets are considered met.

### 11. Prepayments

Prepayments comprise prepaid expenses.

### 12. Long-term deferred income

Deferred income relates to the fair value of financial instruments.



## Notes to parent financial statements

	Instalments within 12 months 2016 EUR'000	Instalments within 12 months 2015 EUR'000	Instalments beyond 12 months 2016 EUR'000	Outstanding after 5 years EUR'000
<b>13. Liabilities other than provisions</b>				
Mortgage debts	509	509	4.191	2.138
Deferred income	0	0	674	0
	<b>509</b>	<b>509</b>	<b>4.865</b>	<b>2.138</b>

	2016 EUR'000	2015 EUR'000
<b>14. Other payables</b>		
VAT and duties	0	10
Wages and salaries, personal income taxes, social security costs, etc payable	130	144
Holiday pay obligation	156	106
Other costs payable	43	67
	<b>329</b>	<b>327</b>

	2016 EUR'000	2015 EUR'000
<b>15. Unrecognised rental and lease commitments</b>		
Hereof liabilities under rental or lease agreements until maturity in total	<b>35</b>	<b>91</b>

### 16. Contingent liabilities

The Company serves as an administration company in a Danish joint taxation arrangement. According to the joint taxation provisions of the Danish Corporation Tax Act, the Company is therefore liable from the financial year 2013 for income taxes etc for the jointly taxed companies and from 01.07.2012 also for obligations, if any, relating to the withholding of tax on interest, royalties and dividends for these companies.

### 17. Mortgages and securities

Mortgage debt is secured by way of mortgage on properties. The carrying amount of mortgaged properties is EUR 1,414 thousand.

The Group has signed a mutual credit agreement with a financial institution involving a total credit limit of EUR 9,119 thousand. The Group has assumed guarantee of payment of the total credit limit.

The amount drawn from the credit facilities totals EUR 2,024 thousand at 31.12.2016.

## Notes to parent financial statements

### 18. Related parties with controlling interest

The following related parties exercise control:

Plastmo Holding GmbH, Germany, shareholder in ACO Nordic Group A/S

Severin Ahlmann Holding GmbH, Germany, shareholder in Plastmo Holding GmbH

ACO Severin Ahlmann GmbH & Co. KG, Germany, shareholder in Severin Ahlmann Holding GmbH

	<b>Parent EUR'000</b>	<b>Other related parties. EUR'000</b>
<b>19. Transactions with related parties</b>		
Administrative costs	234	0
Other operating income and expenses	(12)	1
Other financial income	0	56
Receivables from group enterprises	0	1.872
Payables to group enterprises	0	85

Receivables from and payables to group enterprises carry interest at an annual rate of 1.4 to 1.6%.

## Accounting policies

### Reporting class

This annual report has been presented in accordance with the provisions of the Danish Financial Statements Act governing reporting class C enterprises (large).

The accounting policies applied to these consolidated financial statements and parent financial statements are consistent with those applied last year.

### Recognition and measurement

Assets are recognised in the balance sheet when it is probable as a result of a prior event that future economic benefits will flow to the Entity, and the value of the asset can be measured reliably.

Liabilities are recognised in the balance sheet when the Entity has a legal or constructive obligation as a result of a prior event, and it is probable that future economic benefits will flow out of the Entity, and the value of the liability can be measured reliably.

On initial recognition, assets and liabilities are measured at cost. Measurement subsequent to initial recognition is effected as described below for each financial statement item.

Anticipated risks and losses that arise before the time of presentation of the annual report and that confirm or invalidate affairs and conditions existing at the balance sheet date are considered at recognition and measurement.

Income is recognised in the income statement when earned, whereas costs are recognised by the amounts attributable to this financial year.

### Consolidated financial statements

The consolidated financial statements comprise the Parent and the group enterprises (subsidiaries) that are controlled by the Parent. Control is achieved by the Parent, either directly or indirectly, holding more than 50% of the voting rights or in any other way possibly or actually exercising controlling influence. Enterprises in which the Group, directly or indirectly, holds between 20% and 50% of the voting rights and exercises significant, but not controlling, influence are regarded as associates.

### Basis of consolidation

The consolidated financial statements are prepared on the basis of the financial statements of the Parent and its subsidiaries. The consolidated financial statements are prepared by combining uniform items. On consolidation, intra-group income and expenses, intra-group accounts and dividends as well as profits and losses on transactions between the consolidated enterprises are eliminated. The financial statements used for consolidation have been prepared applying the Group's accounting policies.

Subsidiaries' financial statement items are recognised in full in the consolidated financial statements. Minority interests' pro rata shares of the profit/loss and the net assets are disclosed as separate items in the income statement and the balance sheet, respectively.

## Accounting policies

Investments in subsidiaries are offset at the pro rata share of such subsidiaries' net assets at the takeover date, with net assets having been calculated at fair value.

### Business combinations

Newly acquired or newly established enterprises are recognised in the consolidated financial statements from the time of acquiring or establishing such enterprises. Divested or wound-up enterprises are recognised in the consolidated income statement up to the time of their divestment or winding-up.

The purchase method is applied at the acquisition of new enterprises, under which identifiable assets and liabilities of these enterprises are measured at fair value at the acquisition date. On acquisition of enterprises, provisions are made for costs relating to decided and published restructurings in the acquired enterprise. Allowance is made for the tax effect of restatements.

Positive differences in amount (goodwill) between cost of the acquired share and fair value of the assets and liabilities taken over are recognised under intangible assets, and they are amortised systematically over the income statement based on an individual assessment of their useful life, however, no more than 20 years. Negative differences in amount (negative goodwill), corresponding to an estimated adverse development in the relevant enterprises, are recognised in the balance sheet under deferred income, and they are recognised in the income statement when such adverse development is realised.

### Profits or losses from divestment of equity investments

Profits or losses from divestment or winding-up of subsidiaries are calculated as the difference between selling price or settlement price and the carrying amount of the net assets at the time of divestment or winding-up, inclusive of non-amortised goodwill and estimated divestment or winding-up expenses.

### Foreign currency translation

On initial recognition, foreign currency transactions are translated applying the exchange rate at the transaction date. Receivables, payables and other monetary items denominated in foreign currencies that have not been settled at the balance sheet date are translated using the exchange rate at the balance sheet date. Exchange differences that arise between the rate at the transaction date and the one in effect at the payment date, or the rate at the balance sheet date, are recognised in the income statement as financial income or financial expenses. Property, plant and equipment, intangible assets, inventories and other non-monetary assets that have been purchased in foreign currencies are translated using historical rates.

### Income statement

#### Revenue

Revenue from the sale of manufactured goods and goods for resale is recognised in the income statement when delivery is made and risk has passed to the buyer. Revenue is recognised net of VAT, duties and sales discounts and is measured at fair value of the consideration fixed.

#### Production costs

Production costs comprise expenses incurred to earn revenue for the financial year. Production costs comprise direct and indirect costs for raw materials and consumables, wages and salaries, rent and lease as well as

## Accounting policies

amortisation, depreciation and impairment losses relating to intangible assets and property, plant and equipment included in the production process. In addition, the item includes ordinary write-down of inventories.

### **Distribution costs**

Distribution costs comprise costs incurred for sale and distribution of the Entity's products, including wages and salaries for sales staff, advertising costs, travelling and entertainment expenses, etc as well as amortisation, depreciation and impairment losses relating to intangible assets and property, plant and equipment attached to the distribution process.

### **Administrative costs**

Administrative expenses comprise expenses incurred for the Entity's administrative functions, including wages and salaries for administrative staff and Management, stationery and office supplies as well as amortisation, depreciation and impairment losses relating to intangible assets and property, plant and equipment used for administration of the Entity.

### **Other operating income**

Other operating income comprises income of a secondary nature as viewed in relation to the Entity's primary activities.

### **Other operating expenses**

Other operating expenses comprise expenses of a secondary nature as viewed in relation to the Entity's primary activities.

### **Income from investments in group enterprises**

Income from investments in group enterprises comprises the pro rata share of the individual enterprises' profit/loss after full elimination of internal profits or losses.

### **Income from investments in associates**

Income from investments in associates comprises the pro rata share of the individual associates' profit/loss after elimination of internal profits or losses.

### **Other financial income**

Other financial income comprises dividends etc received on other investments, interest income, including interest income on receivables from group enterprises, net capital gains on payables and transactions in foreign currencies, amortisation of financial assets as well as tax relief under the Danish Tax Prepayment Scheme etc.

### **Other financial expenses**

Other financial expenses comprise interest expenses, including interest expenses on payables to group enterprises, net capital losses on payables and transactions in foreign currencies, amortisation of financial liabilities as well as tax surcharge under the Danish Tax Prepayment Scheme etc.

## Accounting policies

### Tax on profit/loss for the year

Tax for the year, which consists of current tax for the year and changes in deferred tax, is recognised in the income statement by the portion attributable to the profit for the year and recognised directly in equity by the portion attributable to entries directly in equity.

The Company is jointly taxed with all of its Danish subsidiaries and sister subsidiaries. The current Danish income tax is allocated among the jointly taxed companies proportionally to their taxable income (full allocation with a refund concerning tax losses).

### Balance sheet

#### Goodwill

Goodwill is amortised straight-line over its estimated useful life which is fixed based on the experience gained by Management for each business area. The amortisation period is usually five to ten years, however, in certain cases it may be up to 20 years for strategically acquired enterprises with a strong market position and a long-term earnings profile if the longer amortisation period is considered to give a better reflection of the benefit from the relevant resources.

Goodwill is written down to the lower of recoverable amount and carrying amount.

#### Intellectual property rights etc

Intellectual property rights etc comprise development projects completed and in progress with related intellectual property rights, acquired intellectual property rights and prepayments for intangible assets.

Development projects on clearly defined and identifiable products and processes, for which the technical rate of utilisation, adequate resources and a potential future market or development opportunity in the enterprise can be established, and where the intention is to manufacture, market or apply the product or process in question, are recognised as intangible assets. Other development costs are recognised as costs in the income statement as incurred.

The cost of development projects comprises costs such as salaries and amortisation that are directly and indirectly attributable to the development projects.

Indirect production costs in the form of indirect attributable staff costs and amortisation of intangible assets and depreciation on property, plant and equipment used in the development process are recognised in cost based on time spent on each project.

Completed development projects are amortised on a straight-line basis using the estimated useful lives of the assets. The amortisation period is five years. For development projects protected by intellectual property rights, the maximum amortisation period is the remaining duration of the relevant rights. Development projects are written down to the lower of recoverable amount and carrying amount.

Intellectual property rights acquired are measured at cost less accumulated amortisation. Patents are amortised over their remaining duration, and licences are amortised over the term of the agreement, but over no more than 20 years.

## Accounting policies

Intellectual property rights etc are written down to the lower of recoverable amount and carrying amount.

### Property, plant and equipment

Land and buildings as well as other fixtures and fittings, tools and equipment are measured at cost less accumulated depreciation and impairment losses. Land is not depreciated.

Cost comprises the acquisition price, costs directly attributable to the acquisition and preparation costs of the asset until the time when it is ready to be put into operation. For self-constructed assets, cost comprises direct and indirect costs of materials, components, subsuppliers and labour costs. For assets held under finance leases, cost is the lower of the asset's fair value and present value of future lease payments.

Indirect production costs in the form of indirectly attributable staff costs and amortisation of intangible assets and depreciation on property, plant and equipment used in the development process are recognised in cost based on time spent on each asset.

The basis of depreciation is cost less estimated residual value after the end of useful life. Straight-line depreciation is made on the basis of the following estimated useful lives of the assets:

Buildings	20-50 years
Other fixtures and fittings, tools and equipment	5 years

Property, plant and equipment are written down to the lower of recoverable amount and carrying amount.

### Investments in group enterprises

Investments in group enterprises are recognised and measured according to the equity method. This means that investments are measured at the pro rata share of the enterprises' equity plus or minus unamortised positive, or negative, goodwill and plus or minus unrealised intra-group profits or losses.

Group enterprises with negative equity are measured at EUR 0, and any receivables from these enterprises are written down by the Parent's share of such negative equity value if it is deemed irrecoverable. If the negative equity value exceeds the amount receivable, the remaining amount is recognised under provisions if the Parent has a legal or constructive obligation to cover the liabilities of the relevant enterprise.

Upon distribution of profit or loss, net revaluation of investments in group enterprises is transferred to reserve for net revaluation according to the equity method under equity.

Goodwill is calculated as the difference between cost of the investments and fair value of the assets and liabilities acquired. Goodwill is amortised over its estimated useful life which is normally five to ten years, however, in certain cases it may be up to 20 years for strategically acquired enterprises with a strong market position and a long-term earnings profile if the longer amortisation period is considered to give a better reflection of the benefit from the relevant resources.

Investments in group enterprises are written down to the lower of recoverable amount and carrying amount.

## Accounting policies

### Investments in associates

Investments in associates are recognised and measured according to the equity method. This means that investments are measured at the pro rata share of the associates' equity value plus or minus unamortised positive, or negative, goodwill and plus or minus unrealised pro rata internal profits and losses.

Associates with negative equity are measured at EUR 0, and any receivables from these associates are written down by the share of such negative equity if it is deemed irrecoverable. If the negative equity value exceeds the amount receivable, the remaining amount is recognised under provisions if there is a legal or constructive obligation to cover the liabilities of the relevant associate.

Upon distribution of profit or loss, net revaluation of investments in associates is transferred to reserve for net revaluation according to the equity method under equity.

Goodwill is calculated as the difference between cost of the investments and fair value of the pro rata share of assets and liabilities acquired. Goodwill is amortised over its estimated useful life which is normally five to ten years, however, in certain cases it may be up to 20 years for strategically acquired enterprises with a strong market position and a long-term earnings profile if the longer amortisation period is considered to give a better reflection of the benefit from the relevant resources.

Investments in associates are written down to the lower of recoverable amount and carrying amount.

### Receivables

Receivables are measured at amortised cost, usually equalling nominal value, less write-downs for bad and doubtful debts.

### Deferred tax

Deferred tax is recognised on all temporary differences between the carrying amount and tax-based value of assets and liabilities, for which the tax-based value of assets is calculated based on the planned use of each asset.

Deferred tax assets, including the tax base of tax loss carryforwards, are recognised in the balance sheet at their estimated realisable value, either as a set-off against deferred tax liabilities or as net tax assets.

### Inventories

Inventories are measured at the lower of cost using the FIFO method and net realisable value.

Cost of goods for resale, raw materials and consumables consists of purchase price plus delivery costs. Cost of manufactured goods and work in progress consists of costs of raw materials, consumables, direct labour costs and indirect production costs.

Indirect production costs comprise indirect materials and labour costs, costs of maintenance of, depreciation on and impairment losses relating to machinery, factory buildings and equipment applied for the manufacturing process as well as costs of factory administration and management. Financing costs are not included in cost.



## Accounting policies

The net realisable value of inventories is calculated as the estimated selling price less completion costs and costs incurred to execute sale.

### Prepayments

Prepayments comprise incurred costs relating to subsequent financial years. Prepayments are measured at cost.

### Cash

Cash comprises cash in hand and bank deposits.

### Dividend

Dividend is recognised as a liability at the time of adoption at the general meeting. The proposed dividend for the financial year is disclosed as a separate item in equity.

### Other provisions

Other provisions comprise anticipated costs of non-recourse guarantee commitments, returns, loss on contract work in progress, decided and published restructurings, etc.

Other provisions are recognised and measured as the best estimate of the expenses required to settle the liabilities at the balance sheet date. Provisions that are estimated to mature more than one year after the balance sheet date are measured at their discounted value.

On acquisition of enterprises and investments in group enterprises, provisions are made for costs relating to restructurings in the acquired enterprise that were decided and published at the takeover date at the latest.

### Mortgage debt

At the time of borrowing, mortgage debt to mortgage credit institutions is measured at cost which corresponds to the proceeds received less transaction costs incurred. Mortgage debt is subsequently measured at amortised cost. This means that the difference between the proceeds at the time of borrowing and the nominal repayable amount of the loan is recognised in the income statement as a financial expense over the term of the loan applying the effective interest method.

### Operating leases

Lease payments on operating leases are recognised on a straight-line basis in the income statement over the term of the lease.

### Other financial liabilities

Other financial liabilities are measured at amortised cost, which usually corresponds to nominal value.

### Prepayments received from customers

Prepayments received from customers comprise amounts received from customers prior to delivery of the goods agreed or completion of the service agreed.

## Accounting policies

### Deferred income

Deferred income comprises received income for recognition in subsequent financial years. Deferred income is measured at cost.

### Cash flow statement

The cash flow statement shows cash flows from operating, investing and financing activities as well as cash and cash equivalents at the beginning and the end of the financial year.

Cash flows from operating activities are presented using the indirect method and calculated as the operating profit/loss adjusted for non-cash operating items, working capital changes and income taxes paid.

Cash flows from investing activities comprise payments in connection with acquisition and divestment of enterprises, activities and fixed asset investments as well as purchase, development, improvement and sale, etc of intangible assets and property, plant and equipment, including acquisition of assets held under finance leases.

Cash flows from financing activities comprise changes in the size or composition of the contributed capital and related costs as well as the raising of loans, inception of finance leases, instalments on interest-bearing debt, purchase of treasury shares, and payment of dividend.

Cash and cash equivalents comprise cash and short-term securities with an insignificant price risk less short-term bank debt.